

**MIPS**  
**INSTRUMENT APPROACH CHART**

AD ELEV 1568

**TACAN RWY 03**  
**BUECHEL (ETSB)**

LANGEN RADAR		BUECHEL RADAR			BUECHEL TWR			
375.700	125.600	254.550	336.850	344.625	371.350	275.450	140.450	
TACAN	APP COURSE	FAF ALT	Descent GR		MDA	TDZE	ALS-Length	LDA
BUE CH118X	030°	2800	5.2%/3.0°/316ft/NM		1900	1556	1200 M	8225

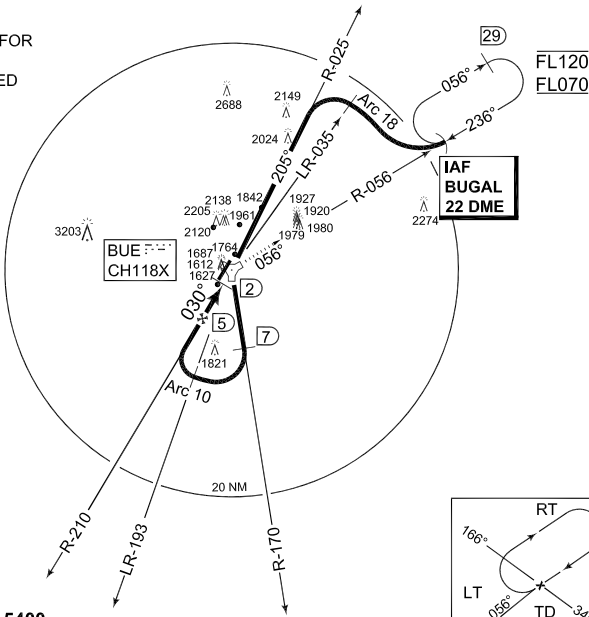
**CAUTION:**

- ① CIRCLING NOT AUTHORIZED WEST OF RWY 03/21

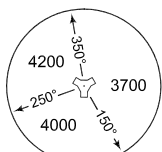
IAF  
50°22.40'N  
007°32.69'E

**NOTE:**

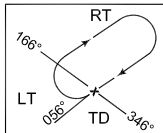
- b) TIMING NOT AUTHORIZED FOR DEFINING THE MAPT
- c) MISSED APCH TURN LIMITED TO KIAS 250 MAX
- d) NO TURN BEFORE MAPT



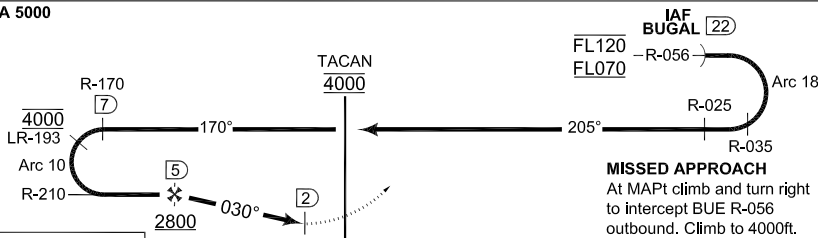
**MSA BUE 25 NM**



**EMERG SAFE ALT 100 NM 5400**



**TA 5000**



Cat I	4.0	TDZE 1556
-------	-----	-----------

CATEGORY	A	B	C	D	E
TACAN 03	1900 - 1.2 344 (400-1.2/1.8)			1900 - 1.2 344 (400-1.2/2.0)	
CIRCLING	1970 - 1.6 402 (500-1.6)	2230 - 1.6 662 (700-1.6)	2380 - 4.0 812 (900-4.0)	2380 - 4.4 812 (900-4.4)	2570 - 4.8 1002 (1100-4.8)
PAR 03	1756 - 1.2 200 (200-1.2/1.6) GS 3.0°				

**TACAN RWY 03**

50°10.43'N  
007°03.80'E

**BUECHEL (ETSB)**

CHANGE: ALS LENGTH, IN FS (271/11, 272/11)

AFSBw 12 JAN 2012