

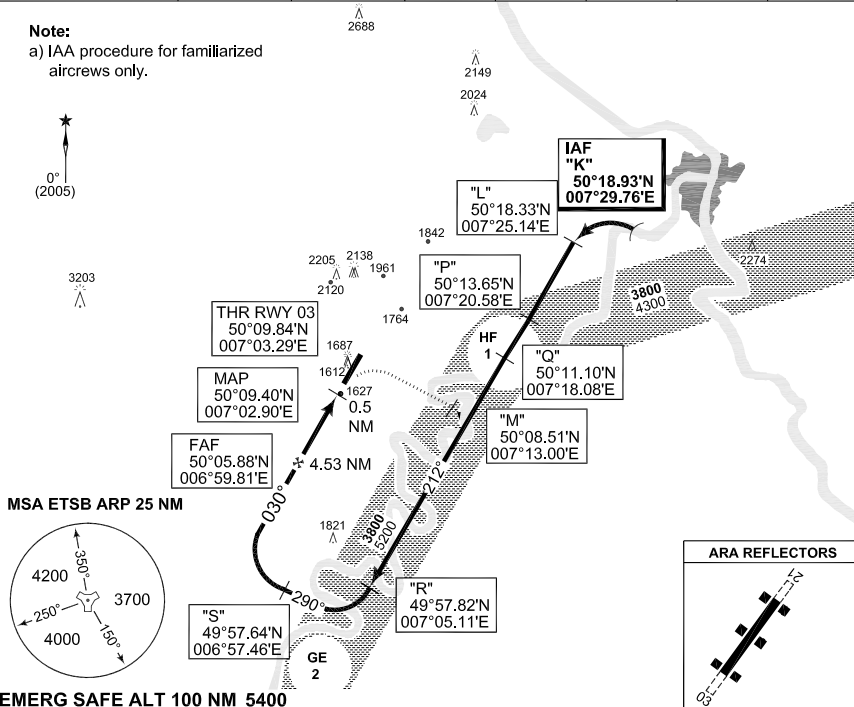
**TERPS INSTRUMENT APPROACH CHART**

AD ELEV 1568

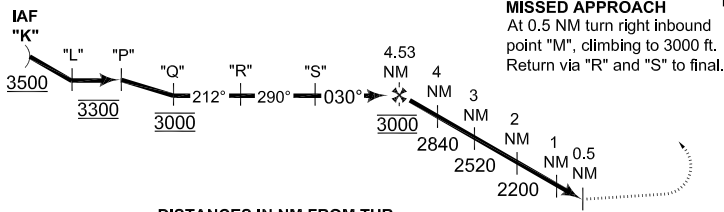
**ARA/IAA RWY 03 BUECHEL (ETSB)**

LANGEN RADAR		BUECHEL RADAR			BUECHEL TWR		
375.700	125.600	254.550	336.850	344.625	371.350	275.450	140.450
APP COURSE		FAF ALT	Desent GR	MDA	TDZE	ALS-Length	LDA
030°		3000		1900	1555	3000	8225

**Note:**  
a) IAA procedure for familiarized aircrews only.



**EMERG SAFE ALT 100 NM 5400**



**MISSED APPROACH TA 5000**  
At 0.5 NM turn right inbound point "M", climbing to 3000 ft. Return via "R" and "S" to final.

DISTANCES IN NM FROM THR

TDZE 1555

Cat I

CATEGORY	A	B	C	D	E
ARA/IAA 03	1900 - 1.2 344 (400-1.2/1.6)			1900 - 1.2 344 (400-1.2/2.0)	

**ARA/IAA RWY 03**

50°10.43'N  
007°03.80'E

**BUECHEL (ETSB)**

CHANGE: MSA CIRCLE (21/9/10)

AFSBw 26 AUG 2010