

MIPS
INSTRUMENT APPROACH CHART

TACAN RWY 21
BUECHEL (ETSB)

AD ELEV 1568

LANGEN RADAR		BUECHEL RADAR			BUECHEL TWR			
375.700	125.600	254.550	336.850	344.625	371.350	275.450	140.450	
TACAN	APP COURSE	FAF ALT	Descent GR		MDA	TDZE	ALS-Length	LDA
BUE CH118X	205°	3000	5.2%/3.0°/316ft/NM		1910	1568	1200 M	8225

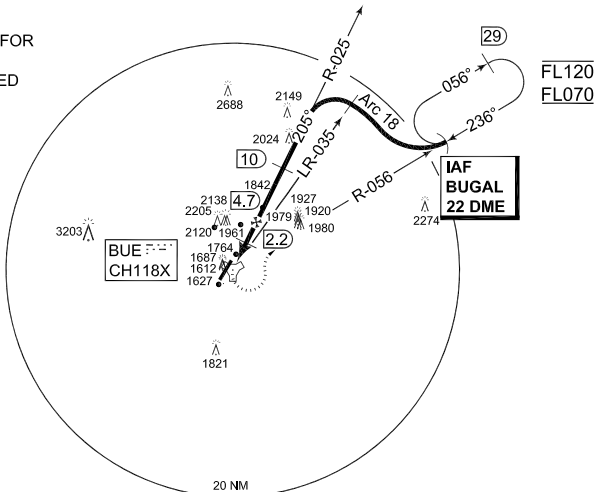
CAUTION:

- ⊕ CIRCLING NOT AUTHORIZED WEST OF RWY 03/21

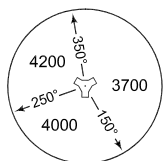
IAF
50°22.40'N
007°32.69'E

NOTE:

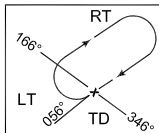
- b) TIMING NOT AUTHORIZED FOR DEFINING THE MAPt
- c) MISSED APCH TURN LIMITED TO KIAS 250 MAX
- d) NO TURN BEFORE MAPt



MSA BUE 25 NM

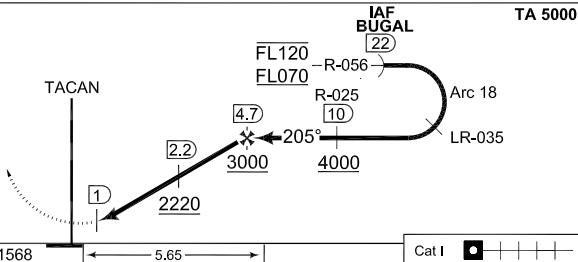


EMERG SAFE ALT 100 NM 5400



MISSED APPROACH

At MAPt climb and turn left to intercept BUE R-056 outbound. Climb to 4000 ft.



CHANGE: ALS LENGTH, IN FS (27/11, 270/11)

AFSBw 12 JAN 2012

	TDZE 1568			5.65		Cat I	
CATEGORY	A	B	C	D	E		
TACAN 21	1910 - 1.2 342 (400-1.2/1.6)			1910 - 1.2 342 (400-1.2/2.0)			
CIRCLING	1970 - 1.6 402 (500-1.6)	2230 - 1.6 662 (700-1.6)	2380 - 4.0 812 (900-4.0)	2380 - 4.4 812 (900-4.4)	2570 - 4.8 1002 (1100-4.8)		
PAR 21	1768 - 0.8 200 (200-0.8/1.2) GS 3.0°						

TACAN RWY 21

50°10.43'N
007°03.80'E

BUECHEL (ETSB)