

**TERPS
INSTRUMENT APPROACH CHART**

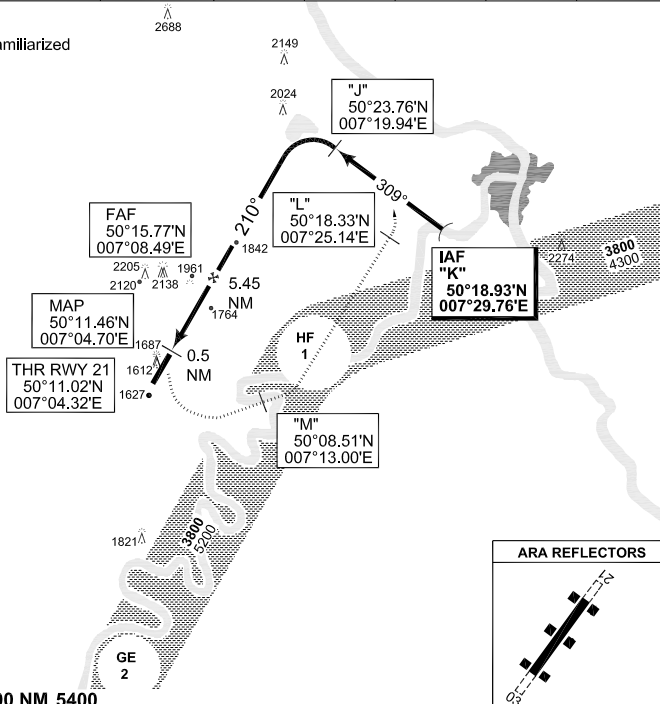
AD ELEV 1568

**ARA/IAA RWY 21
BUECHEL (ETSB)**

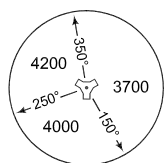
LANGEN RADAR		BUECHEL RADAR			BUECHEL TWR		
375.700	125.600	254.550	336.850	344.625	371.350	275.450	140.450
APP COURSE		FAF ALT	Descent GR	MDA	TDZE	ALS-Length	LDA
210°		3300	320ft/NM	1820	1568	3000	8225

Note:

a) IAA procedure for familiarized aircrews only.



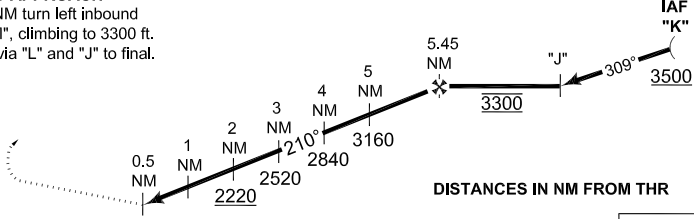
MSA ETSB ARP 25 NM



EMERG SAFE ALT 100 NM 5400

MISSED APPROACH

At 0.5 NM turn left inbound point "M", climbing to 3300 ft. Return via "L" and "J" to final.



TDZE 1568 Cat I

CATEGORY	A	B	C	D	E
ARA/IAA 21	1820 - 0.8 252 (300-0.8/1.6)		1820 - 1.2 252 (300-1.2/1.6)		1820 - 1.2 252 (300-1.2/2.0)

ARA/IAA RWY 21

50°10.43'N
007°03.80'E

BUECHEL (ETSB)

CHANGE: MSA CIRCLE (2/19/10)

AFSBw 26 AUG 2010