

**PANS-OPS  
INSTRUMENT APPROACH CHART**

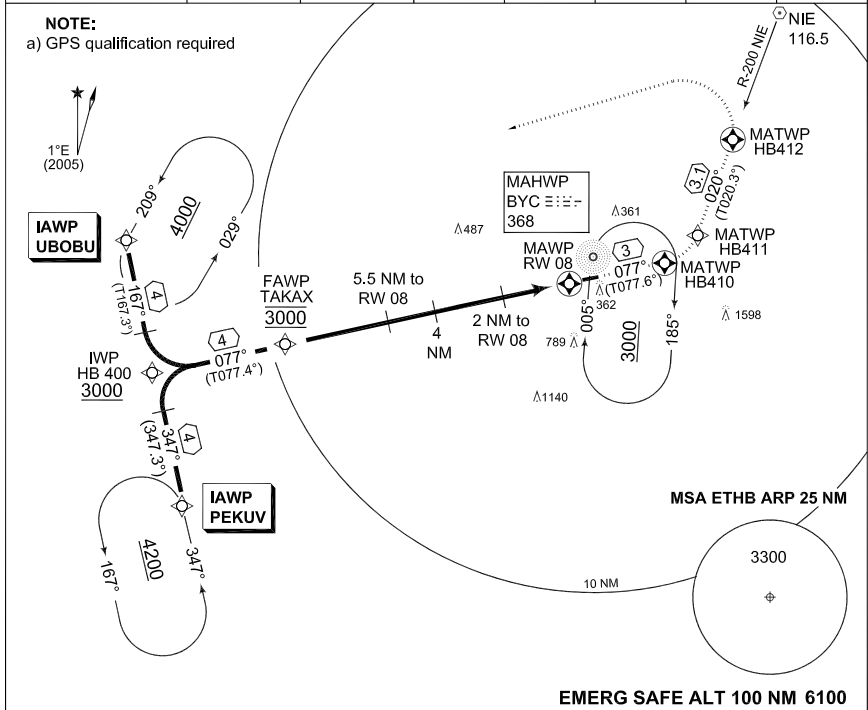
**RNAV (GPS) RWY 08  
BÜCKEBURG (ETHB)**

AD ELEV 230

BREMEN RADAR 259.725 131.325		BÜCKEBURG RADAR 389.450 124.500		BÜCKEBURG TWR 341.250 140.400			
NDB BYC 368	APP COURSE 077°	FAWP ALT 3000	Descent GR 3.0° (5.2%)	MDA 580	THR ELEV 225	LDA 5476	

**NOTE:**

a) GPS qualification required



TA 5000

\*VERTICAL FLY-BY APPROVED

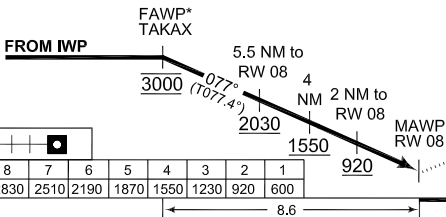
**MISSED APPROACH RNAV (GPS)**

Climb on track 077° to HB410, LT via HB411 on track 020° inbound NIE to 4000 ft. When passing HB412, LT inbound IAWP UBOBU.

HB410-HB411-HB412-UBOBU [A4000]

**NON RNAV**

Climb straight ahead to 1500 ft. When passing R-200 NIE, LT climb inbound NIE VOR. When passing 2000 ft, LT climb to 3000 ft inbound BYC NDB.



THR ELEV 225

TCH 49

S-ALS

DIST THR	8	7	6	5	4	3	2	1
ALTITUDE	2830	2510	2190	1870	1550	1230	920	600

CATEGORY	A	B	C	D	E
<b>MINIMA ACCORDING TO PANS-OPS CRITERIA</b>					
GPS 08	<b>580 - 0.8 355 (400-0.8/1.6)</b>				

**RNAV (GPS) RWY 08**

52°16.71'N  
009°04.93'E

**BÜCKEBURG (ETHB)**

CHANGE: PROFILE (47/10)

AFSBw 06 MAY 2010