

**PANS-OPS  
INSTRUMENT APPROACH CHART**

**RNAV (GPS) RWY 26  
BUECKEBURG (ETHB)**

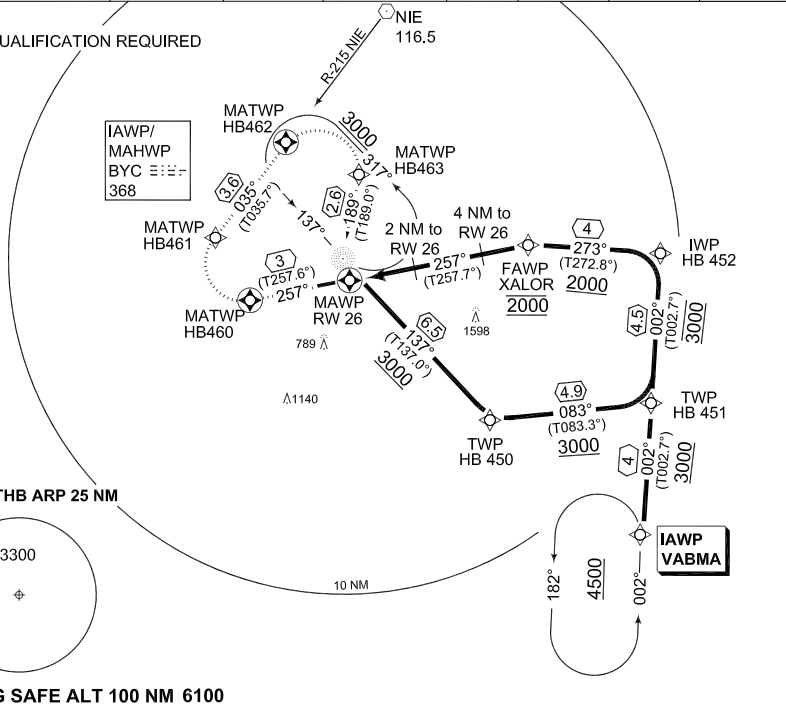
AD ELEV 230

BREMEN RADAR 259.725 131.325		BUECKEBURG RADAR 389.450 124.500		BUECKEBURG TWR 341.250 140.400			
NDB BYC 368	APP COURSE 257°	FAWP ALT 2000	Descent GR 474 ft/NM / 7.8%	MDA 880	THR ELEV 213	ALS-Length 870 M	LDA 6010

**NOTE:**  
GPS QUALIFICATION REQUIRED



IAWP/  
MAHP  
BYC 368



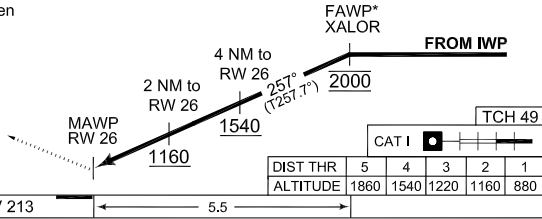
MSA ETHB ARP 25 NM

**EMERG SAFE ALT 100 NM 6100**

**MISSED APPROACH RNAV (GPS)**  
Climb on track 257° to HB 460, RT via HB461 on track 035° inbound NIE to 3000 ft. When passing HB462, RT via HB463 to BYC.  
HB460-HB461-HB462-HB463-BYC [A3000]

\*VERTICAL FLY-BY APPROVED **TA 5000**

**NON RNAV**  
Climb straight ahead to 1500 ft. When passing R-215 NIE, RT climb inbound NIE VOR. When passing 2000 ft, RT climb to 3000 ft inbound BYC NDB.



THR ELEV 213	5.5	
--------------	-----	--

CATEGORY	A	B	C	D	E
<b>MINIMA ACCORDING TO PANS-OPS CRITERIA</b>					
GPS 26	<b>880</b> - 0.8 667 (700-0.8/1.6)		<b>880</b> - 2.0 667 (700-2.0/2.8)		

**RNAV (GPS) RWY 26** 52°16.71'N  
009°04.93'E **BUECKEBURG (ETHB)**

CHANGE: ALS LENGTH (27/1/1)

AFSBw 12 JAN 2011