

**PANS-OPS
INSTRUMENT APPROACH CHART**

**RNAV (GPS) RWY 26
BÜCKEBURG (ETHB)**

AD ELEV 230

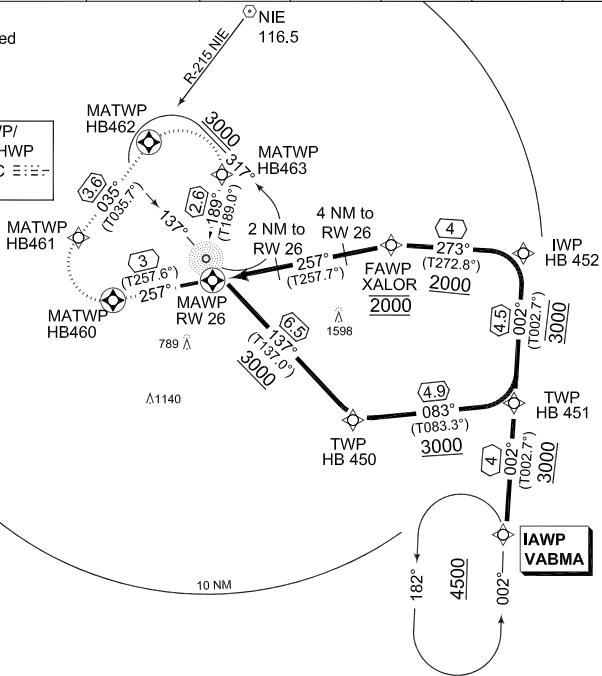
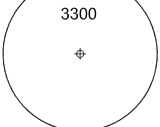
BREMEN RADAR 259.725 131.325		BÜCKEBURG RADAR 389.450 124.500		BÜCKEBURG TWR 341.250 140.400			
NDB BYC 368	APP COURSE 257°	FAWP ALT 2000	Descent GR 474 ft/NM 7.8%	MDA 880	THR ELEV 213	LDA 6010	

NOTE:
a) GPS qualification required



IAWP/
MAHP
BYC 368

MSA ETHB ARP 25 NM



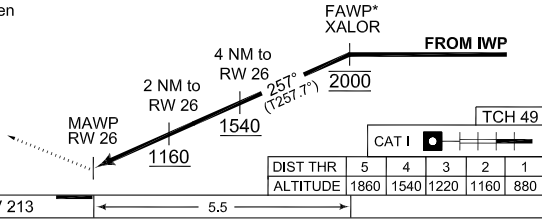
EMERG SAFE ALT 100 NM 6100

MISSED APPROACH RNAV (GPS)
Climb on track 257° to HB 460, RT via HB461 on track 035° inbound NIE to 3000 ft. When passing HB462, RT via HB463 to BYC.

*VERTICAL FLY-BY APPROVED **TA 5000**

HB460-HB461-HB462-HB463-BYC [A3000]

NON RNAV
Climb straight ahead to 1500 ft. When passing R-215 NIE, RT climb inbound NIE VOR. When passing 2000 ft, RT climb to 3000 ft inbound BYC NDB.



DIST THR	5	4	3	2	1
ALTITUDE	1860	1540	1220	1160	880

CHANGE: PROFILE (47/10)	CATEGORY	A	B	C	D	E
	MINIMA ACCORDING TO PANS-OPS CRITERIA					
	GPS 26	880 - 0.8 667 (700-0.8/1.6)		880 - 2.0 667 (700-2.0/2.8)		

RNAV (GPS) RWY 26

52°16.71'N
009°04.93'E

BÜCKEBURG (ETHB)

AFSBw 06 MAY 2010