

**MIPS INSTRUMENT APPROACH CHART**

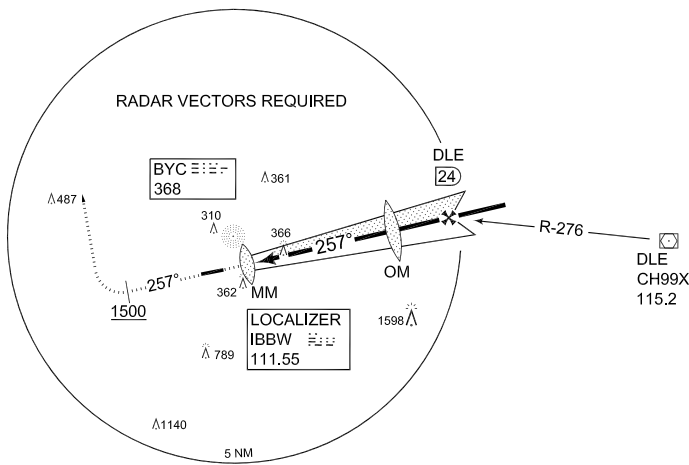
AD ELEV 230

**ILS RWY 26 BUECKEBURG (ETHB)**

BREMEN RADAR 259.725 131.325		BUECKEBURG RADAR 389.450 124.500		BUECKEBURG TWR 341.250 140.400			
LOCALIZER IBBW 111.55	APP COURSE 257°	FAF ALT 2000	GS 3.2°	DA see CAT	THR ELEV 213	ALS-Length 870 M	LDA 6010

**CAUTION:**

**CIRCLING NOT AUTHORIZED S OF RWY**



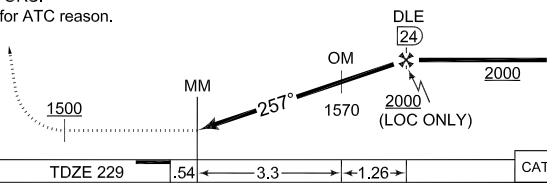
**EMERG SAFE ALT 100 NM 6100**

**MISSED APPROACH**

Climb on track 257° to 2000 ft. When passing 1500 ft turn right heading 350°. Expect RADAR VECTORS. PDG 5% (304 ft/NM) for ATC reason.

	LOC: FAF - MAPt 4.56 NM			
Knots	60	90	120	150
Min:Sec	4:31	3:00	2:16	1:48

**TA 5000**



GS 3.2°  
TCH 54

CAT I	<input checked="" type="checkbox"/>	<input type="checkbox"/>	<input type="checkbox"/>	<input type="checkbox"/>
-------	-------------------------------------	--------------------------	--------------------------	--------------------------

CATEGORY	H	A	B	C
ILS 26	466 - 0.8 237 (300-0.8)	483 - 0.8 254 (300-0.8/1.6)	492 - 0.8 263 (300-0.8/1.6)	502 - 0.8 273 (300-0.8/1.6)
LOC 26	1050 - 0.8 821 (900-0.8/1.6)	1050 - 0.8 821 (900-0.8/1.6)	1050 - 1.2 821 (900-1.2/2.0)	1050 - 3.2 821 (900-3.2/4.0)
CIRCLING	N/A	1050 - 1.6 821 (900-1.6)	1050 - 2.0 821 (900-2.0)	1180 - 4.8 951 (1000-4.8)

CHANGE: ALS LENGTH (27/1/1)

AFSBw 12 JAN 2012

**ILS RWY 26**

52°16.71'N  
009°04.93'E

**BUECKEBURG (ETHB)**