

**MIPS  
INSTRUMENT APPROACH CHART**

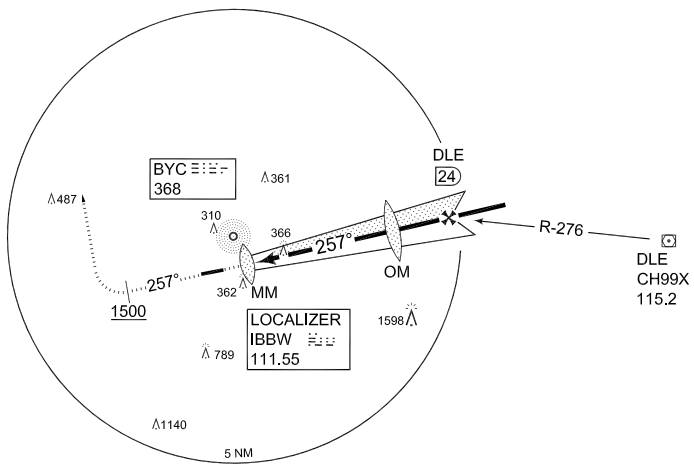
AD ELEV 230

**ILS RWY 26  
BÜCKEBURG (ETHB)**

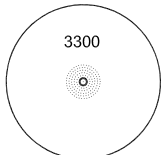
BREMEN RADAR 259.725 131.325		BÜCKEBURG RADAR 389.450 124.500		BÜCKEBURG TWR 341.250 140.400			
LOCALIZER IBBW 111.55	APP COURSE 257°	FAF ALT 2000	GS 3.2°	DA see CAT	THR ELEV 213		LDA 6010

**CAUTION:**  
CIRCLING NOT AUTHORIZED S OF RWY

**RADAR VECTORS REQUIRED**



**MSA BYC 25 NM**

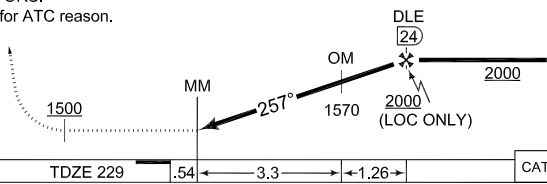


**EMERG SAFE ALT 100 NM 6100**

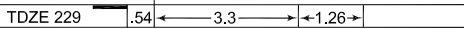
**MISSED APPROACH**  
Climb on track 257° to 2000 ft. When passing 1500 ft turn right heading 350°. Expect RADAR VECTORS. PDG 5% (304 ft/NM) for ATC reason.

	LOC: FAF - MAPt 4.56 NM				
Knots	60	90	120	150	
Min:Sec	4:31	3:00	2:16	1:48	

**TA 5000**



GS 3.2°  
TCH 54



CATEGORY	H	A	B	C
ILS 26	466 - 0.8 237 (300-0.8)	483 - 0.8 254 (300-0.8/1.6)	492 - 0.8 263 (300-0.8/1.6)	502 - 0.8 273 (300-0.8/1.6)
LOC 26	1050 - 0.8 821 (900-0.8/1.6)	1050 - 0.8 821 (900-0.8/1.6)	1050 - 1.2 821 (900-1.2/2.0)	1050 - 3.2 821 (900-3.2/4.0)
CIRCLING	N/A	1050 - 1.6 821 (900-1.6)	1050 - 2.0 821 (900-2.0)	1180 - 4.8 951 (1000-4.8)

CHANGE: PROFILE (47/10)

AFSBW 06 MAY 2010

**ILS RWY 26**

52°16.71'N  
009°04.93'E

**BÜCKEBURG (ETHB)**