

MIPS INSTRUMENT APPROACH CHART

AD ELEV 230

NDB B BÜCKEBURG (ETHB)

BREMEN RADAR 259.725 131.325		BÜCKEBURG RADAR 389.450 124.500		BÜCKEBURG TWR 341.250 140.400			
NDB BYC 368	APP COURSE 205°	FAF ALT	Descent GR	MDA 820	TDZE	LDA 5476/6010	

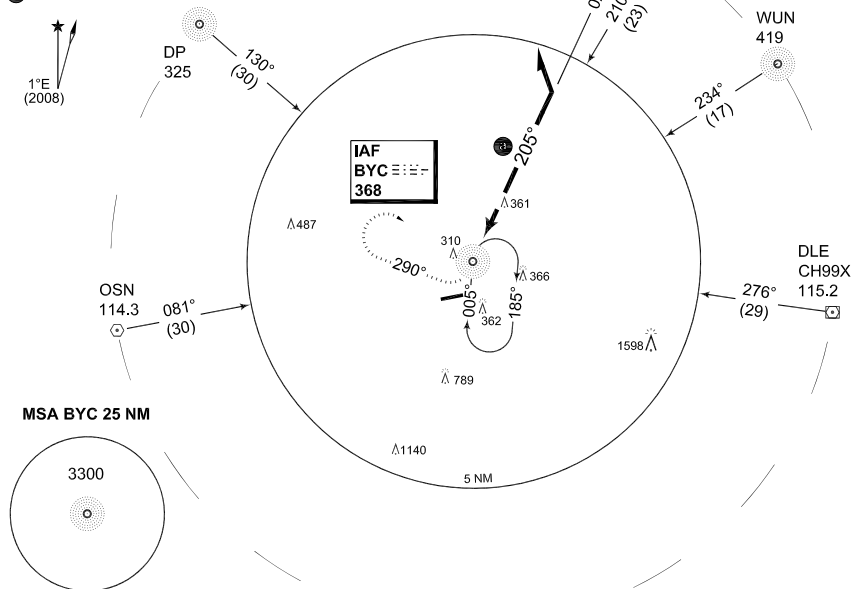
NOTE:

(a) OUTBOUND TIMING 1 MIN

CAUTION:

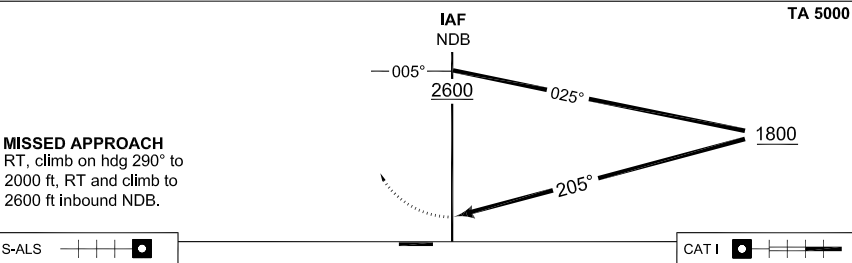
(b) CIRCLING NOT AUTHORIZED S OF RWY

IAF 52°17.47'N
009°05.46'E



EMERG SAFE ALT 100 NM 6100

TA 5000



S-ALS [] CAT I []

CATEGORY	A	
(b) CIRCLING	820 - 1.6 590 (600-1.6)	

CHANGE: PROFILE (47/10)

AFSBw 06 MAY 2010

NDB B

52°16.71'N
009°04.93'E

BÜCKEBURG (ETHB)