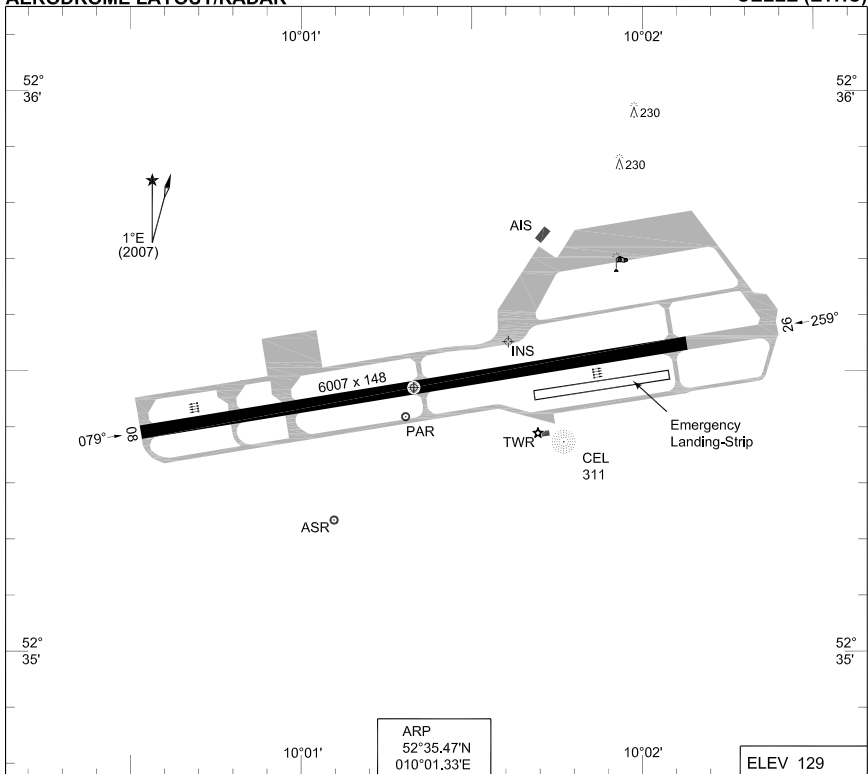


MIPS AERODROME LAYOUT/RADAR

CELLE (ETHC)



ARP
52°35.47'N
010°01.33'E

ELEV 129

RWY	LCN	TORA	ASDA	TODA	LDA	PAPI	TDZE	THR PSN	
08	55	6007	6007	6007	6007	3.0°	129	52°35.39'N	010°00.52'E
26	55	6007	6007	6007	6007	3.0°	128	52°35.55'N	010°02.13'E

CELLE TWR 281.900 257.800 122.100
 CELLE RADAR 283.925 344.000 379.275 385.400 130.500 139.035x

* REASON ATC

	RWY	GS	TCH	OTCH	RPI	CAT	MINIMA	MISSED APCH PDG
PAR	08	3.0°	36			ABCDE	330 - 1.2 200 (200-1.2)	304 ft NM / 5.0% *
	26	3.0°	49			ABCDE	330 - 0.8 200 (200-0.8/1.2)	304 ft NM / 5.0% *
PAR	079	3.0°				COPTER	230 - 0.8 100 (100-0.8)	304 ft NM / 5.0% *
	259	3.0°				COPTER	230 - 0.4 100 (100-0.4/0.8)	304 ft NM / 5.0% *
SRA	08					AB	560 - 1.6 430 (500-1.6)	
						C	560 - 2.0 430 (500-2.0)	
						DE	560 - 2.4 430 (500-2.4)	
	26					AB	540 - 0.8 410 (500-0.8/1.6)	304 ft NM / 5.0% *
						CD	540 - 1.2 410 (500-1.2/2.0)	304 ft NM / 5.0% *
						E	540 - 1.6 410 (500-1.6/2.4)	304 ft NM / 5.0% *
H-079 H-259					COPTER	560 - 0.8 430 (500-0.8)		
					COPTER	540 - 0.4 410 (500-0.4/0.8)	304 ft NM / 5.0% *	

CHANGE: LAYOUT (59, 227/10)

AFSBw 26 AUG 2010

AERODROME LAYOUT/RADAR

CELLE (ETHC)