

**MIPS
INSTRUMENT APPROACH CHART**

**COPTER NDB RWY 26
DIEPHOLZ (ETND)**

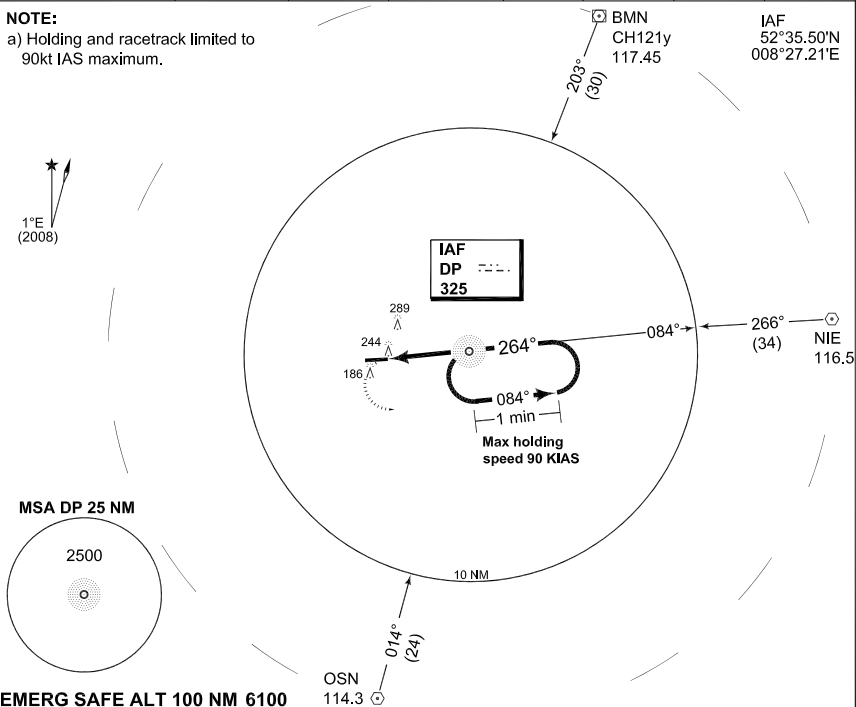
AD ELEV 127

BREMEN RADAR 372.550 125.025		DIEPHOLZ TWR 379.300 140.600						
NDB DP 325	APP COURSE 264°	FAF ALT 1550	Descent GR 5.97%/3.4°	MDA 530	TDZE 126	ALS-Length 2559	LDA 4081	

NOTE:

a) Holding and racetrack limited to 90kt IAS maximum.

IAF
52°35.50'N
008°27.21'E



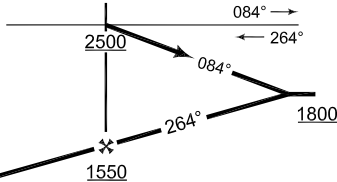
EMERG SAFE ALT 100 NM 6100

MISSED APPROACH

Left turn climbing to 2500 ft and rehome DP NDB.

IAF
NDB

TA 5000



CHANGE: ALS (09/10)

NDB: MAP at THR					
NDB to MAP 3.8 NM					
Knots	60	90	120	150	180
Min:Sec	3:48	2:32	1:54	1:31	1:16

TDZE 126

3.8

TCH 47

CATEGORY	COPTER
H-NDB 264°	530 - 0.4 404 (500-0.4/0.8)

COPTER NDB RWY 26

52°35.13'N
008°20.46'E

DIEPHOLZ (ETND)

AFSBW 26 AUG 2010