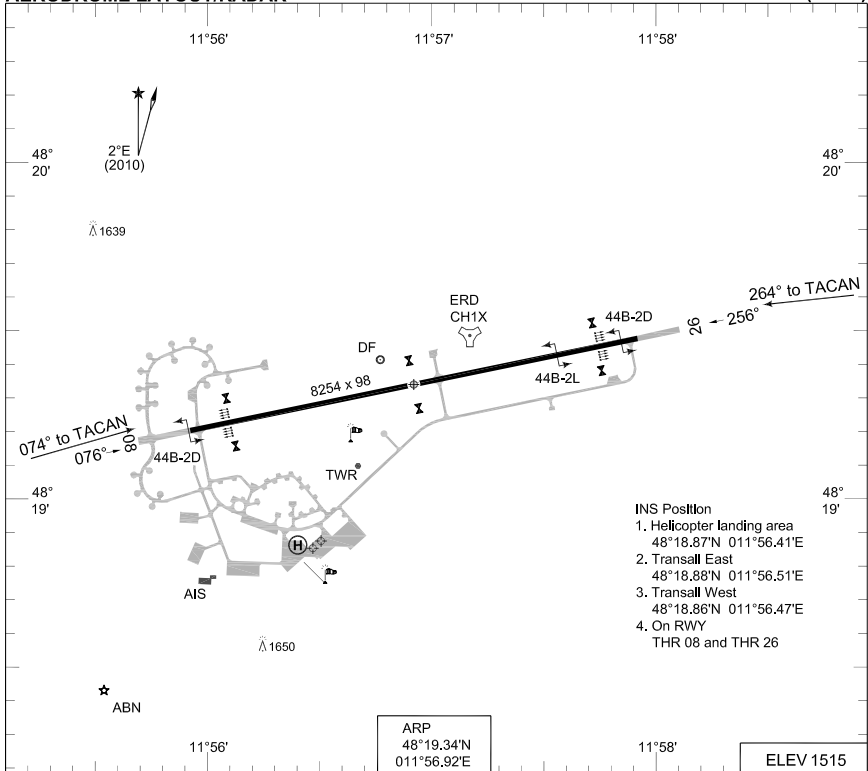


**TERPS  
AERODROME LAYOUT/RADAR**

**ERDING (ETSE)**



- INS Position
1. Helicopter landing area  
48°18.87'N 011°56.41'E
  2. Transall East  
48°18.88'N 011°56.51'E
  3. Transall West  
48°18.86'N 011°56.47'E
  4. On RWY  
THR 08 and THR 26

ARP  
48°19.34'N  
011°56.92'E

ELEV 1515

RWY	LCN	TORA	ASDA	TODA	LDA	PAPI	TDZE	THR PSN
08	89	8254	8254	8254	8254	3.0°	1515	48°19.21'N 011°55.93'E
26	89	8254	8254	8254	8254	3.0°	1502	48°19.48'N 011°57.92'E

ERDING TWR 369.450 122.100 120.200

	RWY	GS	TCH	OTCH	RPI	CAT	MINIMA

CHANGE: LAYOUT (255/10)

AFSBw 26 AUG 2010

**AERODROME LAYOUT/RADAR**

**ERDING (ETSE)**