

**TERPS  
INSTRUMENT APPROACH CHART**

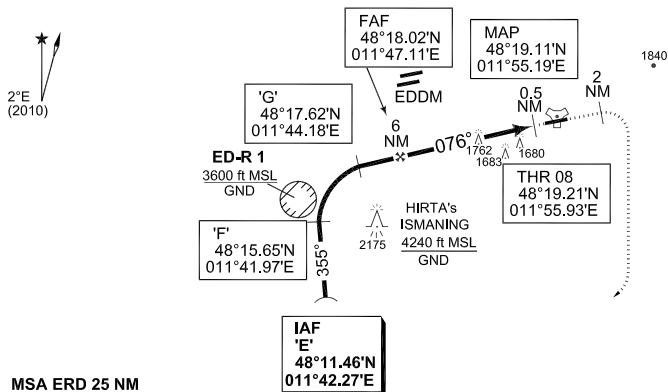
AD ELEV 1515

**IAA RWY 08  
ERDING (ETSE)**

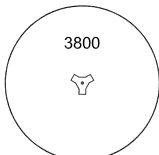
MÜNCHEN RADAR 259.550 127.950		ERDING TWR 369.450 122.100 120.200					
TACAN ERD CH1X	APP COURSE 076°	FAF ALT 3300	Descent GR	MDA 1940	TDZE 1515	ALS-Length 1250	LDA 8254

**WARNING:**

- a) Do not overshoot final track 076° to the north.
- b) IAA procedure for familiarized aircrews only.



MSA ERD 25 NM

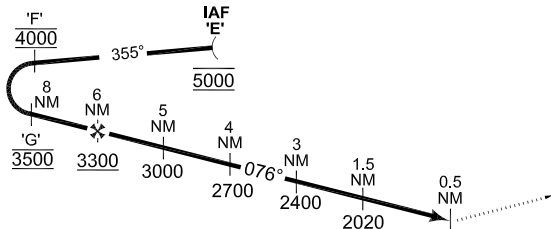


**ARA REFLECTORS**



**EMERG SAFE ALT 100 NM 14600**

**TA 5000**



**MISSED APPROACH**  
At 0.5 NM climb straight ahead to 2 NM. Turn right heading 180°, climb to 4000 ft and return to IAF 'E'.

CAT I

TDZE 1515

CATEGORY	A	B	C	D	E
IAA 08	1940 - 1.6 425 (500-1.6)		1940 - 2.0 425 (500-2.0)		1940 - 2.4 425 (500-2.4)

CHANGE: MSA, PROFILE (37.192/10)

AFSBW 01 JUL 2010

**IAA RWY 08**

48°19.34'N  
011°56.92'E

**ERDING (ETSE)**