

TERPS INSTRUMENT APPROACH CHART

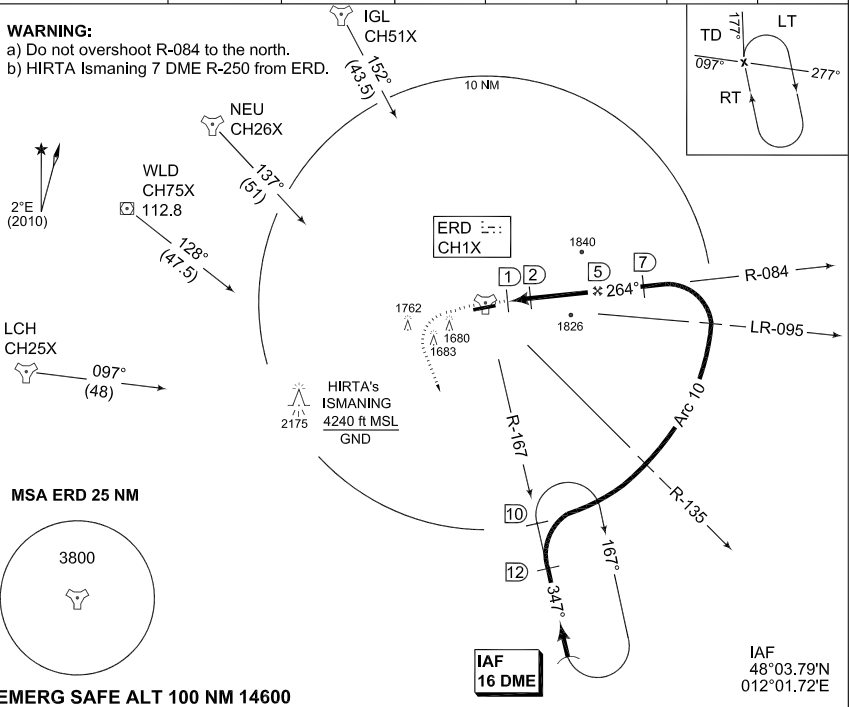
AD ELEV 1515

TACAN RWY 26 ERDING (ETSE)

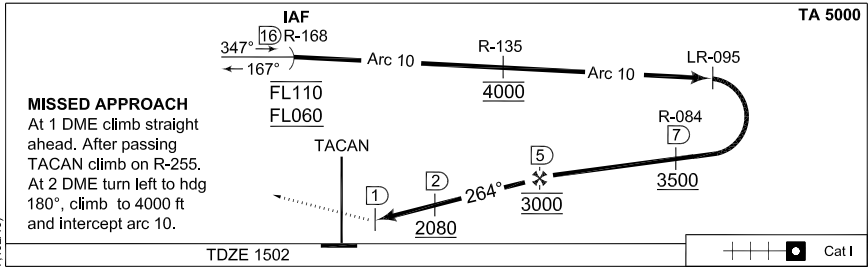
MÜNCHEN RADAR 259.550 127.950		ERDING TWR 369.450 122.100 120.200					
TACAN ERD CH1X	APP COURSE 264°	FAF ALT 3000	Descent GR	MDA 1960	TDZE 1502	ALS-Length 3000	LDA 8254

WARNING:

- a) Do not overshoot R-084 to the north.
- b) HIRTA Ismaning 7 DME R-250 from ERD.



EMERG SAFE ALT 100 NM 14600



MISSED APPROACH
 At 1 DME climb straight ahead. After passing TACAN climb on R-255. At 2 DME turn left to hdg 180°, climb to 4000 ft and intercept arc 10.

CATEGORY	A	B	C	D	E
S-TACAN 26	1960 - 0.8 458 (500-0.8/1.6)		1960 - 1.2 458 (500-1.2/2.0)	1960 - 1.6 458 (500-1.6/2.4)	

TACAN RWY 26

48°19.34'N
011°56.92'E

ERDING (ETSE)

CHANGE: PROFILE, MSA (37.192/10)

AFSBW 01 JUL 2010