

**TERPS  
INSTRUMENT APPROACH CHART**

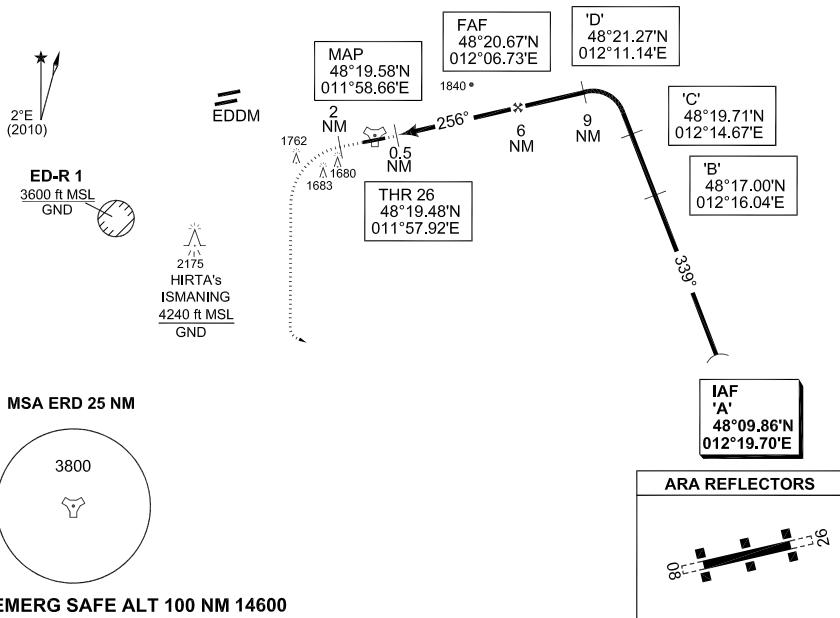
AD ELEV 1515

**IAA RWY 26  
ERDING (ETSE)**

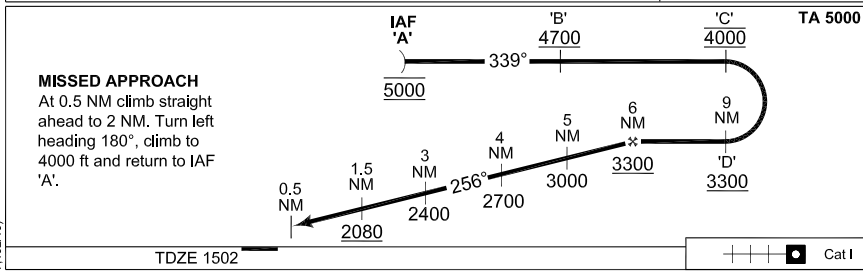
MÜNCHEN RADAR 259.550 127.950		ERDING TWR 369.450 122.100 120.200					
TACAN ERD CH1X	APP COURSE 256°	FAF ALT 3300	Descent GR	MDA 1960	TDZE 1502	ALS-Length 3000	LDA 8254

**WARNING:**

- a) Do not overshoot final track 256° to the north.
- b) IAA procedure for familiarized aircrews only.



**EMERG SAFE ALT 100 NM 14600**



**MISSED APPROACH**

At 0.5 NM climb straight ahead to 2 NM. Turn left heading 180°, climb to 4000 ft and return to IAF 'A'.

CHANGE: PROFILE, MSA (37.192/10)

CATEGORY	A	B	C	D	E
IAA 26	1960 - 0.8 458 (500-0.8/1.6)		1960 - 1.2 458 (500-1.2/2.0)	1960 - 1.6 458 (500-1.6/2.4)	

**IAA RWY 26**

48°19.34'N  
011°56.92'E

**ERDING (ETSE)**

AFSBW 01 JUL 2010