

**MIPS
INSTRUMENT APPROACH CHART**

AD ELEV 245

**COPTER NDB 015
FASSBERG (ETHS)**

BREMEN RADAR 259.725 131.325		FASSBERG RADAR 379.075 122.425		FASSBERG TWR 338.075 118.525			
NDB CEL 311 / FSB 284		APP COURSE 015°		MDA 750		ALS-Length —	LDA 1640

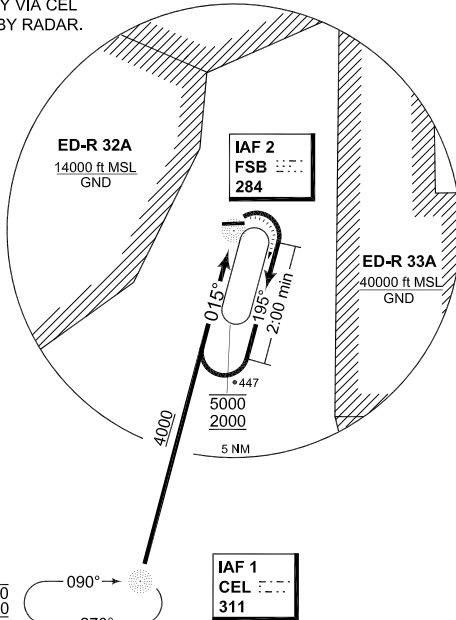
NOTE:

- a) RADAR MONITORED ONLY.
- b) ENTER FSB HOLDING ONLY VIA CEL NDB UNLESS VECTORED BY RADAR.

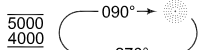
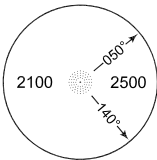
ED-R 32B
10500 ft MSL
GND

IAF 1 CEL
52°35.38'N
010°01.77'E

IAF 2 FSB
52°54.94'N
010°11.28'E

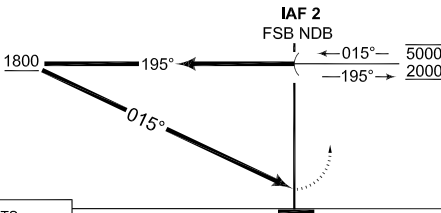


MSA FSB 25 NM



EMERG SAFE ALT 100 NM 6100

TA 5000



MISSED APPROACH
Turn right and climb within
FSB holding to 2000 ft MSL.

NO LIGHTS

CATEGORY	COPTER
H-015°	750 - 0.8 505 (600-0.8)

CHANGE: ALS LENGTH, TWR FREQ (271/11.289/11)

AFSBw 12 JAN 2012

COPTER NDB 015

52°55.16'N
010°11.03'E

FASSBERG (ETHS)