

MIPS
INSTRUMENT APPROACH CHART

AD ELEV 566

NDB RWY 30
FRITZLAR (ETHF)

LANGEN RADAR		FRITZLAR RADAR			FRITZLAR TWR				
379.900	127.725	253.500	123.300	135.600	284.600	122.100			
NDB	APP COURSE	FAF ALT	Descent GR	MDA	TDZE	ALS-Length	LDA		
FTZ 468	289°	2900	7.6%	see CAT	565	600 M	3421		

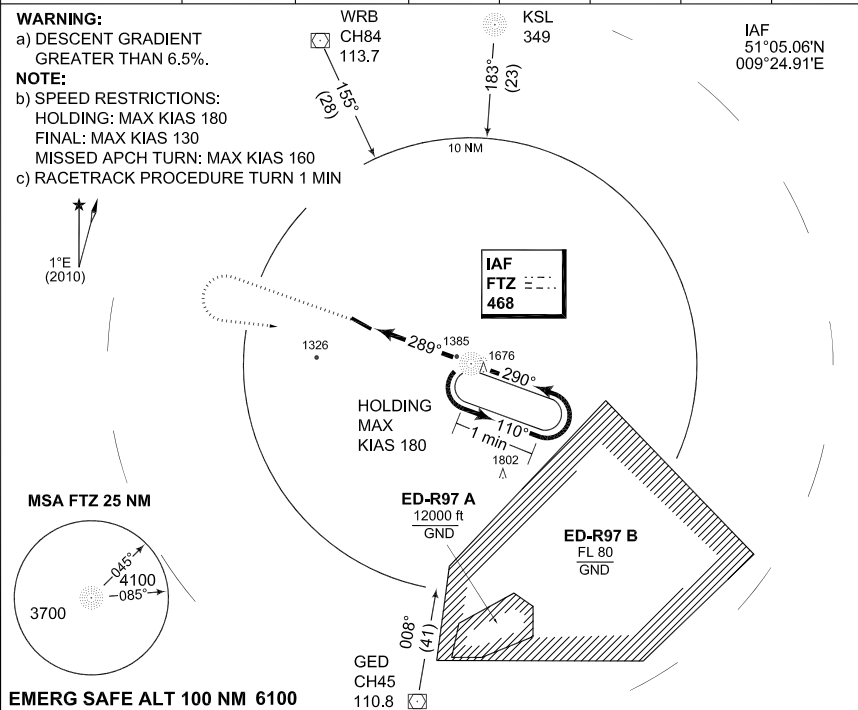
WARNING:

a) DESCENT GRADIENT
GREATER THAN 6.5%.

NOTE:

- b) SPEED RESTRICTIONS:
HOLDING: MAX KIAS 180
FINAL: MAX KIAS 130
MISSED APCH TURN: MAX KIAS 160
c) RACETRACK PROCEDURE TURN 1 MIN

IAF
51°05.06'N
009°24.91'E



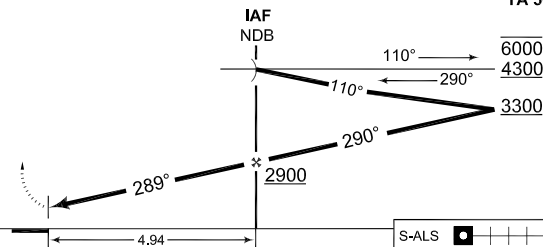
LOC: FAF - MAPt 4.94 NM

TA 5000

Knots	70	90	110	130
Min:Sec	4:14	3:18	2:42	2:10

MISSED APPROACH

Climb to 4300 ft on track 289°, when passing 2500 ft turn left inbound FTZ NDB. Missed approach turn limited to 160kt IAS. Minimum PDG 5% (304 ft/NM).



CHANGE: ESA, TDZE, NOTE, EDR (09/12)

CATEGORY	A	B	C
MINIMA ACCORDING TO STANAG 3759			
NDB 30	1400 - 1.2 834 (900-1.2/1.6)	1400 - 1.6 834 (900-1.6/2.0)	1430 - 3.6 864 (900-3.6/4.0)

NDB RWY 30

51°06.87'N
009°17.15'E

FRITZLAR (ETHF)

AFSBw 03 MAY 2012