

**MIPS
INSTRUMENT APPROACH CHART**

AD ELEV 566

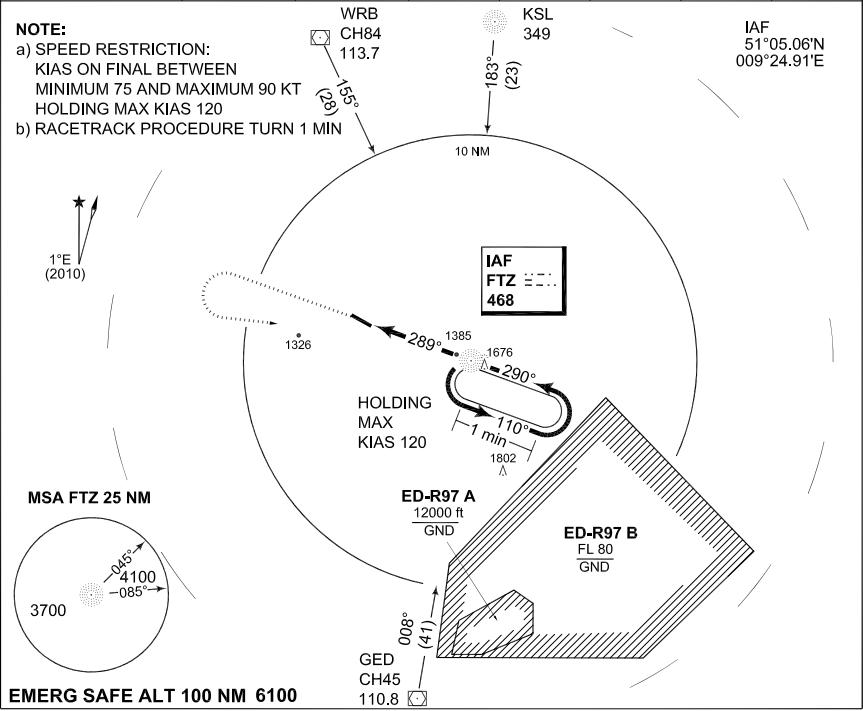
**COPTER NDB RWY 30
FRITZLAR (ETHF)**

LANGEN RADAR		FRITZLAR RADAR			FRITZLAR TWR				
379.900	127.725	253.500	123.300	135.600	284.600	122.100			
NDB		APP COURSE	FAF ALT	Descent GR	MDA	TDZE	ALS-Length	LDA	
FTZ 468		289°	2900	7.7%	1340	565	600 M	3421	

NOTE:

- a) SPEED RESTRICTION:
KIAS ON FINAL BETWEEN
MINIMUM 75 AND MAXIMUM 90 KT
HOLDING MAX KIAS 120
- b) RACETRACK PROCEDURE TURN 1 MIN

IAF
51°05.06'N
009°24.91'E



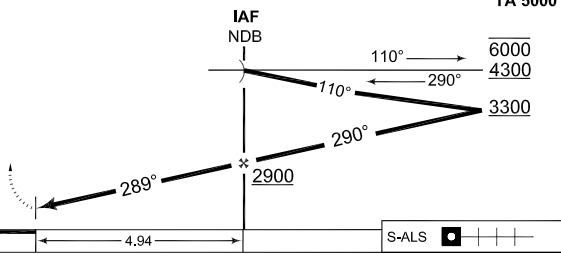
EMERG SAFE ALT 100 NM 6100

LOC: FAF - MAPt 4.94 NM
Knots: 75 80 85 90
MIn:Sec: 3:57 3:42 3:29 3:18

TA 5000

MISSED APPROACH

Climb to 4300 ft on track 289°, when passing 2500ft turn left inbound FTZ NDB. Missed approach turn limited to 160 kt IAS. Minimum PDG: 5% (304 ft/NM).



CHANGE: ESA, TDZE, NOTE, EDR (09/12)

CATEGORY	H
	MINIMA ACCORDING TO STANAG 3759
Copter NDB RWY 30	1340 - 0.8 774 (800-0.8/1.2)

AFSBw 03 MAY 2012

COPTER NDB RWY 30

51°06.87'N
009°17.15'E

FRITZLAR (ETHF)