

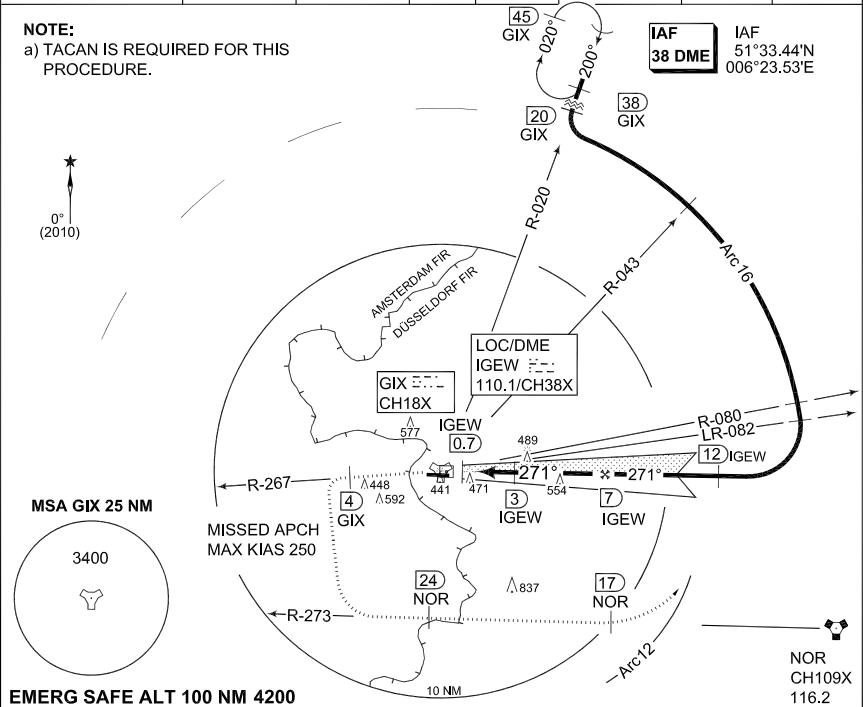
MIPS INSTRUMENT APPROACH CHART

AD ELEV 292

ILS RWY 27 GEILENKIRCHEN (ETNG)

LANGEN RADAR		FRISBEE RADAR		FRISBEE TWR		ATIS	
337.850	128.500	244.550	123.725	378.575	140.075	120.050	278.200
LOCALIZER/DME	APP COURSE	GS INTCP ALT	GS	DA	TDZE	ALS-Length	LDA
IGEW 110.1/CH38X	271°	2500	3.0°	see CAT	289	900 M	9516

NOTE:
a) TACAN IS REQUIRED FOR THIS PROCEDURE.

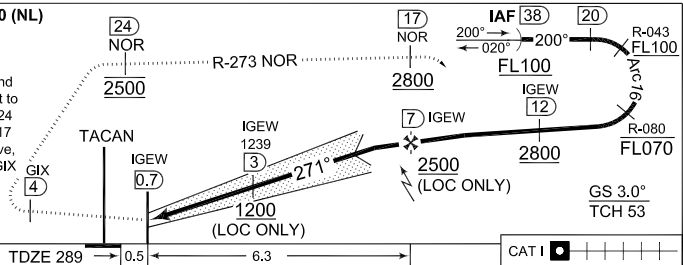


EMERG SAFE ALT 100 NM 4200

**TA 5000 (FRG), TA 3000 (NL)
TA 4500 (B)**

MISSED APPROACH

Climb on R-267 GIX outbound to 2500 ft. At 4 DME turn left to intercept R-273 NOR, pass 24 DME NOR at 2500 ft. Pass 17 DME NOR at 2800 ft or above, turn left to intercept arc 12 GIX and return to final.



CHANGE: ALS LENGTH (27/1/1)

CATEGORY	A	B	C	D	E
ILS 27		489 - 0.8/550 200 (200-0.8/1.2)			495 - 0.8/550 206 (300-0.8/1.2)
LOC 27	710 - 0.8 414 (500-0.8/1.6)		710 - 1.2 414 (500-1.2/2.0)		710 - 1.6 414 (500-1.6/2.4)
PAR 27	489 - 0.8 200 (200-0.8/1.2) GS 3.0°				

ILS RWY 27

50°57.65'N
006°02.51'E

GEILENKIRCHEN (ETNG)

AFSBw 12 JAN 2012