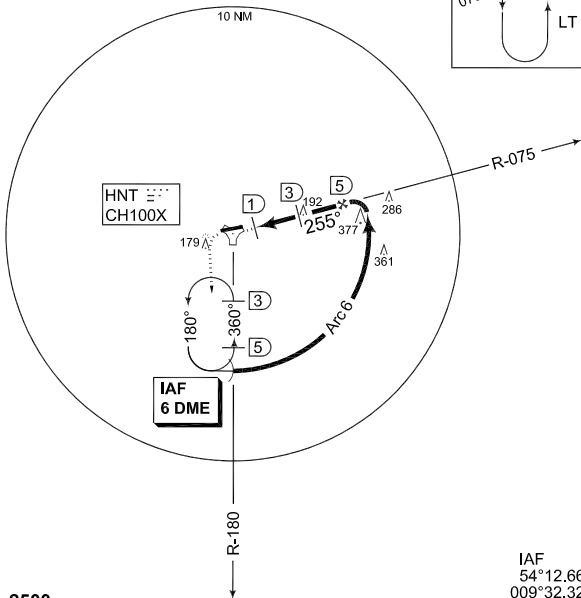
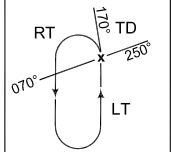


**TERPS
INSTRUMENT APPROACH CHART**

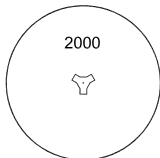
AD ELEV 39

**TACAN 2 RWY 26
HOHN (ETNH)**

BREMEN RADAR 371.750 124.075		HOHN RADAR 279.050 141.100		HOHN TWR 369.300 141.700			
TACAN HNT CH100X	APP COURSE 255°	FAF ALT 1500		MDA 380	TDZE 38	ALS-Length 900 M	LDA 8005



MSA HNT 25 NM

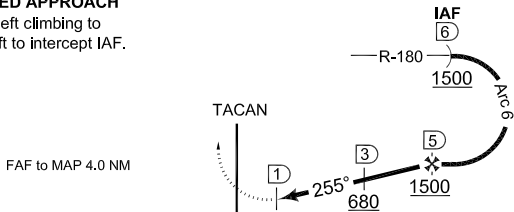


EMERG SAFE ALT 100 NM 2500

IAF
54°12.66'N
009°32.32'E

MISSED APPROACH
Turn left climbing to 1500 ft to intercept IAF.

TA 5000



TDZE 38

4.3



CHANGE: ALS LENGTH (27/1/11)

CATEGORY	A
S-TACAN 2 26	380 - 0.8 342 (400-0.8/1.6)

TACAN 2 RWY 26

54°18.73'N
009°32.29'E

HOHN (ETNH)

AFSBw 12 JAN 2012