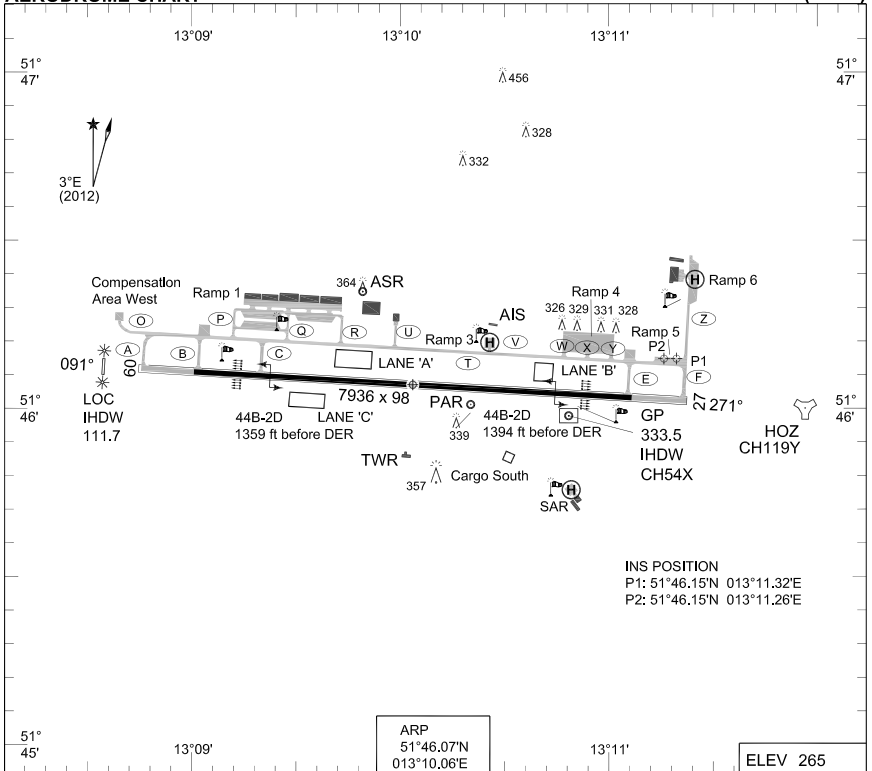


**TERPS  
AERODROME CHART**

**HOLZDORF (ETSH)**



INS POSITION  
P1: 51°46.15'N 013°11.32'E  
P2: 51°46.15'N 013°11.26'E

ARP  
51°46.07'N  
013°10.06'E

ELEV 265

RWY	PCN	TORA	ASDA	TODA	LDA	PAPI	TDZE	THR PSN
09	120/F/A/W/T	7937	7937	7937	7937	3.0°	260	51°46.11'N 013°09.01'E
27	120/F/A/W/T	7937	7937	7937	7937	3.0°	265	51°46.03'N 013°11.11'E

HOLZDORF TWR 267.400 130.500 122.100  
HOLZDORF RADAR 277.100 278.075 123.300 129.850 SSR 7060 - 7067

	RWY	GS	TCH	OTCH	RPI	CAT	MINIMA
PAR	09	3.0°	46		867	ABCDE	460 - 0.8 200 (200-0.8/1.2)
	27	3.0°	47		902	ABCDE	465 - 0.8 200 (200-0.8/1.2)
	091					COPTER	360 - 0.4 100 (100-0.4/0.8)
	271					COPTER	365 - 0.4 100 (100-0.4/0.8)
SRA	09					AB	660 - 0.8 400 (400-0.8/1.6)
						C	660 - 1.2 400 (400-1.2/1.6)
						D	660 - 1.2 400 (400-1.2/2.0)
						E	660 - 1.6 400 (400-1.6/2.4)
	27					AB	660 - 0.8 400 (400-0.8/1.6)
						C	660 - 1.2 400 (400-1.2/1.6)
						D	660 - 1.2 400 (400-1.2/2.0)
						E	660 - 1.6 400 (400-1.6/2.4)

CHANGE: VAR, PCN (16/12)

AFSBw 08 MAR 2012

**AERODROME CHART**

**HOLZDORF (ETSH)**