

**MIPS  
INSTRUMENT APPROACH CHART**

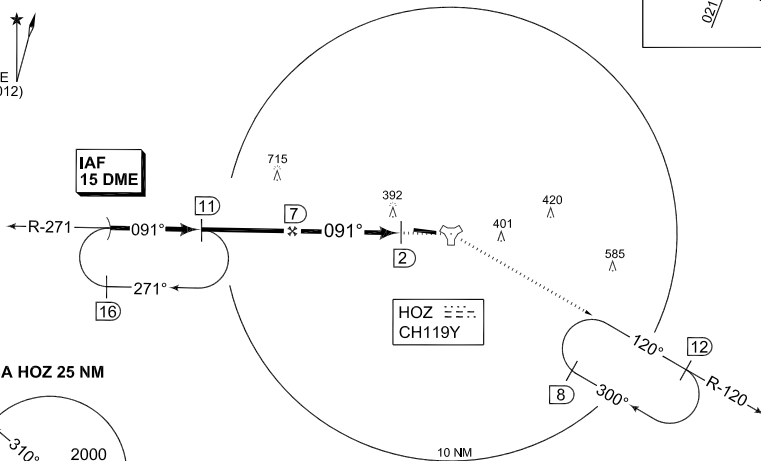
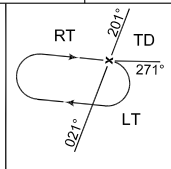
AD ELEV 265

**TACAN 2 RWY 09  
HOLZDORF (ETSH)**

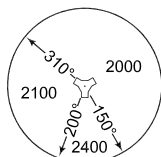
|                                 |                    |   |                    |            |   |                     |             |
|---------------------------------|--------------------|---|--------------------|------------|---|---------------------|-------------|
| BREMEN RADAR<br>398.575 126.425 |                    | HOLZDORF RADAR<br>277.100 278.075 123.300 129.850 |                    |            | HOLZDORF TWR<br>267.400 130.500 122.100 |                     |             |
| TACAN<br>HOZ CH119Y             | APP COURSE<br>091° | FAF ALT<br>1900                                   | Descent GR<br>5.2% | MDA<br>670 | TDZE<br>260                             | ALS-Length<br>900 M | LDA<br>7937 |

NOTE:

- CIRCLING CAT B NOT AUTHORIZED SOUTH OF RWY 27/09
- b) TIMING NOT AUTHORIZED FOR DEFINING THE MAP.



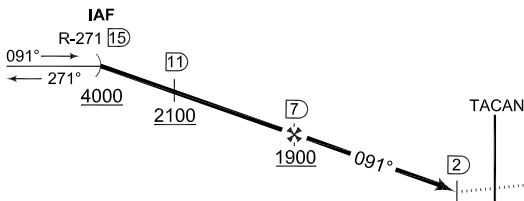
MSA HOZ 25 NM



IAF  
51°46.84'N  
012°47.83'E

EMERG SAFE ALT 100 NM 6400

TA 5000



**MISSED APPROACH**

Climb straight ahead. Over HOZ TACAN turn right and proceed on R-120 outbound. Rehome holding TACAN 1 RWY 09 and climb to 4000 ft.

|       |     |          |
|-------|-----|----------|
| CAT I | 5.2 | TDZE 260 |
|-------|-----|----------|

| CATEGORY   | A                                   | B                         | C                           | D | E                           |
|------------|-------------------------------------|---------------------------|-----------------------------|---|-----------------------------|
| S-TACAN 09 | 670 - 0.8 410 (500-0.8/1.6)         |                           | 670 - 1.2 410 (500-1.2/2.0) |   | 670 - 1.6 410 (500-1.6/2.4) |
| CIRCLING   | 760 - 1.6 495 (500-1.6)             | ● 760 - 1.6 495 (500-1.6) | No circling allowed         |   |                             |
| S-PAR 09   | 460 - 0.8 200 (200-0.8/1.2) GS 3.0° |                           |                             |   |                             |

CHANGE: VAR (16/12)

AFSBw 08 MAR 2012

**TACAN 2 RWY 09**

51°46.07'N  
013°10.06'E

**HOLZDORF (ETSH)**