

MIPS
INSTRUMENT APPROACH CHART

AD ELEV 265

ILS RWY 27
HOLZDORF (ETSH)

BREMEN RADAR		HOLZDORF RADAR				HOLZDORF TWR			
398.575	126.425	277.100	278.075	123.300	129.850	267.400	130.500	122.100	
LOCALIZER / DME		APP COURSE	GS INTCP ALT	GS	DA	TDZE	ALS-Length	LDA	
IHDW 111.7/CH54X		271°	2700	3.0°	465	265	900 M	7937	

NOTE:

- a) CIRCLING CAT B NOT AUTHORIZED SOUTH OF RWY 27/09
- b) SPEED RESTRICTION: BASETURN MAX KIAS 220
- c) NDB REQUIRED

IAF
51°46.22'N
013°05.87'E

KLF
CH98Y
115.15

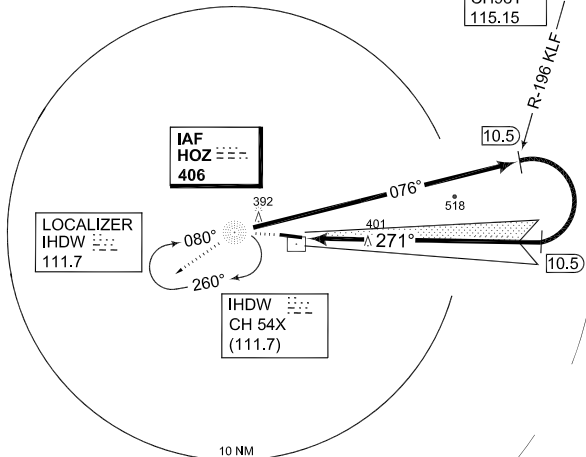
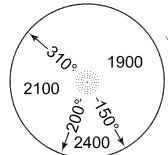
IAF
HOZ
406

LOCALIZER
IHDW
111.7

IHDW
CH 54X
(111.7)



MSA HOZ 25 NM



EMERG SAFE ALT 100 NM 6400

FAF - MAP 7 NM					IAF/NDB		TA 5000	
Knots	60	90	120	150	180			
Min:Sec	7:00	4:40	3:30	2:48	2:20			

MISSED APPROACH
Climb inbound HOZ NDB to 3000 ft and enter holding.

TDZE 265 0.54 CAT I

CATEGORY	A	B	C	D	E
S-ILS 27	465 - 0.8 200 (200-0.8/1.2)				
S-LOC 27	650 - 0.8 385 (400-0.8/1.6)		650 - 1.2 385 (400-1.2/1.6)	650 - 1.2 385 (400-1.2/2.0)	
CIRCLING	760 - 1.6 495 (500-1.6)	760 - 1.6 495 (500-1.6)			

ILS RWY 27

51°46.07'N
013°10.06'E

HOLZDORF (ETSH)

CHANGE: VAR (16/12)

AFSBw 08 MAR 2012