

**MIPS
INSTRUMENT APPROACH CHART**

AD ELEV 265

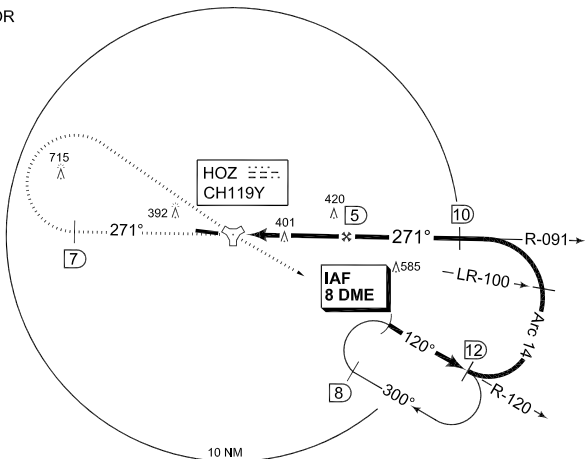
**TACAN RWY 27
HOLZDORF (ETSH)**

BREMEN RADAR		HOLZDORF RADAR			HOLZDORF TWR		
398.575	126.425	277.100	278.075	123.300	129.850	267.400	130.500 122.100
TACAN		APP COURSE	FAF ALT	Descent GR	MDA	TDZE	ALS-Length LDA
HOZ CH119Y		271°	2000	5.2%	650	265	900 M 7937

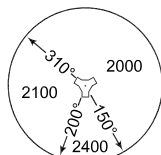
NOTE:

- a) CIRCLING CAT B NOT AUTHORIZED SOUTH OF RWY 27/09.
- b) MISSED APCH TURN LIMITED MAX KIAS 250.
- c) MISSED APCH MINIMUM KIAS 210 AND MINIMUM BANK 20°.
- d) TIMING NOT AUTHORIZED FOR DEFINING THE MAP.

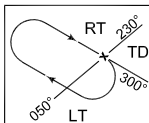
IAF
51°41.76'N
013°22.84'E



MSA HOZ 25 NM

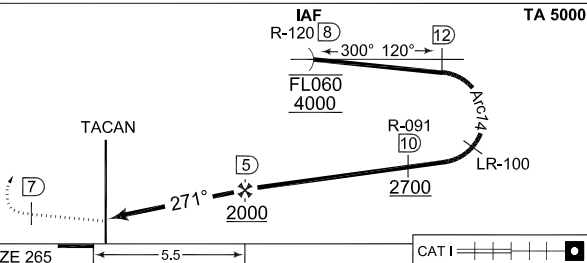


EMERG SAFE ALT 100 NM 6400



MISSED APPROACH

Climb to 4000 ft on HOZ R-271. At HOZ R-271 7 DME turn right and proceed inbound HOZ. At HOZ proceed on R-120 outbound to IAF.



TDZE 265

5.5

CAT I

CATEGORY	A	B	C	D	E
S-TACAN 27	650 - 0.8 385 (400-0.8/1.6)		650 - 1.2 385 (400-1.2/1.6)	650 - 1.2 385 (400-1.2/2.0)	
CIRCLING	760 - 1.6 495 (500-1.6)	760 - 1.6 495 (500-1.6)			
S-PAR 27	465 - 0.8 200 (200-0.8/1.2) GS 3.0°				

CHANGE: VAR (16/12)

AFSBw 08 MAR 2012

TACAN RWY 27

51°46.07'N
013°10.06'E

HOLZDORF (ETSH)