

**MIPS  
INSTRUMENT APPROACH CHART**

AD ELEV 265

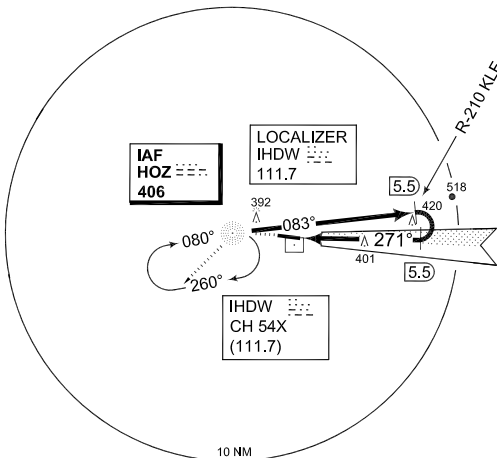
**COPTER ILS RWY 27  
HOLZDORF (ETSH)**

BREMEN RADAR 398.575 126.425		HOLZDORF RADAR 277.100 278.075 123.300 129.850			HOLZDORF TWR 267.400 130.500 122.100		
LOCALIZER/DME IHDW 111.7/CH54X	APP COURSE 271°	GS INTCP ALT 1600	GS 3.0°	DA 465	TDZE 265	ALS-Length 900 M	LDA 7937

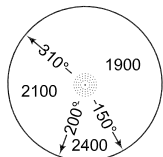
**NOTE:**  
a) NDB REQUIRED

IAF  
51°46.22'N  
013°05.87'E

KLF  
CH98Y  
115.15



MSA HOZ 25 NM



**EMERG SAFE ALT 100 NM 6400**

<b>FAF - MAPt 3.5 NM</b>					<b>IAF/NDB</b>	<b>TA 5000</b>
Knots	60	90	120	150		
Min:Sec	3:30	2:20	1:45	1:28	1:10	

4000  
2200

**MISSED APPROACH**  
Climb inbound NDB to 2200 ft and intercept holding.

080° → 260° ← 083° → R-210 KLF 5.5

MAPt 0.7 IHDW 4.2 5.5

GS 3.0° TCH 55

1600 (LOC only) 1600

TDZE 265 → 0.54 CAT I

CATEGORY	COPTER
H-ILS 27	<b>465</b> - 0.6 200 (200-0.6/0.8)
H-LOC 27	<b>650</b> - 0.6 385 (400-0.6/1.0)

CHANGE: VAR (16/12)

AFSBw 08 MAR 2012

**COPTER ILS RWY 27**

51°46.07'N  
013°10.06'E

**HOLZDORF (ETSH)**