

**PANS-OPS
INSTRUMENT APPROACH CHART**

AD ELEV 1203

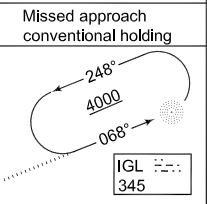
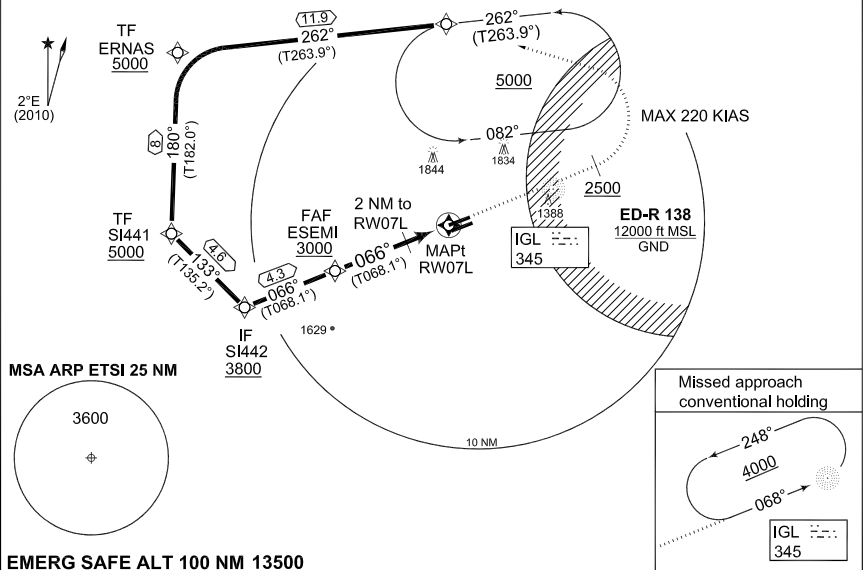
**RNAV (GNSS) RWY 07L
INGOLSTADT/MANCHING (ETSI)**

MUENCHEN RADAR 242.200		INGO RADAR 278.100 120.600 125.575			INGO TWR 373.200 125.250			
NDB IGL 345	APP COURSE 066°	FAF ALT 3000	GS 3.1°	MDA see CAT	TDZE 1196	ALS-Length 900 M	LDA 8002	

NOTE:

- a) GPS QUALIFICATION REQUIRED.
- b) MISSED APCH TURN LIMITED TO KIAS 220.
- c) NO TURN BEFORE MAPt.
- ① CIRCLING NOT AUTHORIZED N OF RWY 07L/25R.

**IAF/MAHF
INGAP**



EMERG SAFE ALT 100 NM 13500

Distance THR	5	4	3	2	1
Altitude	2930	2590	2250	1910	1570

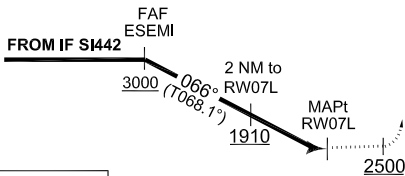
TA 5000

MISSED APPROACH

Climb on track 066°. When passing 2500 ft turn left direct INGAP. Climb to 5000 ft and enter holding. [M066,A2500+;L] - INGAP [A5000+]

CONVENTIONAL MISSED APPROACH

Climb inbound IGL NDB. Climb within published holding to 4000 ft.



CAT I	■	5.2	TDZE 1196	TCH 50
-------	---	-----	-----------	--------

CATEGORY	A	B	C	D	E
MINIMA ACCORDING TO MIPS CRITERIA					
GNSS 07L	1580 - 0.8 384 (400-0.8/1.6)	1590 - 1.2 394 (400-1.2/1.6)	1610 - 1.2 414 (500-1.2/2.0)		
① CIRCLING	1700 - 1.6 497 (500-1.6)	1710 - 1.6 507 (600-1.6)	1970 - 3.6 767 (800-3.6)	2120 - 4.8 917 (1000-4.8)	2220 - 4.8 1017 (1100-4.8)

RNAV (GNSS) RWY 07L

48°42.94'N
011°32.02'E

INGOLSTADT/MANCHING (ETSI)

CHANGE: ALS LENGTH (27/1/1)

AFSBw 12 JAN 2012