

**PANS-OPS INSTRUMENT APPROACH CHART**

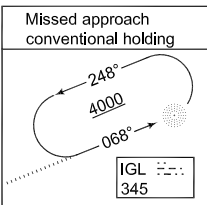
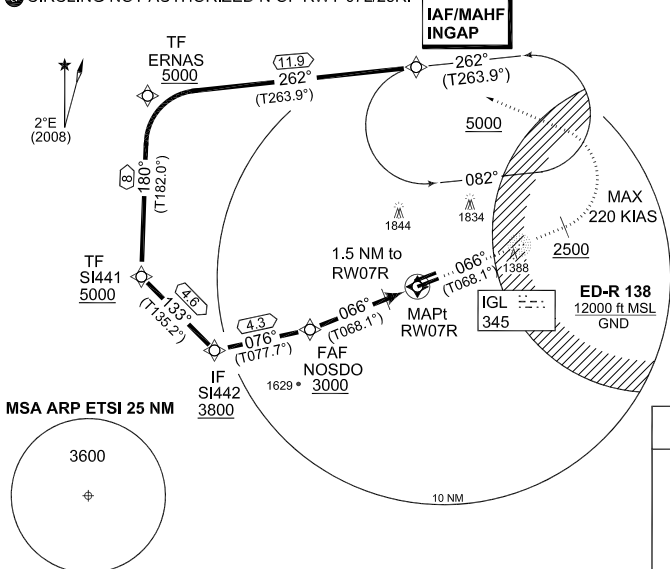
AD ELEV 1203

**RNAV (GNSS) RWY 07R INGOLSTADT/MANCHING (ETSI)**

MUNICHEN RADAR 242.200		INGO RADAR 278.100 120.600 125.575			INGO TWR 373.200 125.250			
NDB IGL 345	APP COURSE 066°	FAF ALT 3000	GS 3.2°	MDA <b>see CAT</b>	TDZE 1201	ALS-Length 855 M	LDA 9646	

**NOTE:**

- a) GPS QUALIFICATION REQUIRED.
- b) MISSED APCH TURN LIMITED TO KIAS 220.
- c) NO TURN BEFORE MAPt.
- ① CIRCLING NOT AUTHORIZED N OF RWY 07L/25R.



**EMERG SAFE ALT 100 NM 13500**

Distance THR	5	4	3	2	1
Altitude	2960	2620	2280	1940	1600

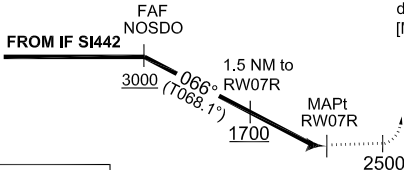
**TA 5000**

**MISSED APPROACH**

Climb on track 066°. When passing 2500 ft turn left direct INGAP. Climb to 5000 ft and enter holding.  
 [M066, A2500+; L] - INGAP [A5000+]

**CONVENTIONAL MISSED APPROACH**

Climb straight ahead inbound IGL NDB. Climb within published holding to 4000 ft.



**TCH 50**

CAT I		5.1	TDZE 1201
-------	--	-----	-----------

CATEGORY	A	B	C	D	E
<b>MINIMA ACCORDING TO MIPS CRITERIA</b>					
GNSS 07R	<b>1560</b> - 0.8 359 (400-0.8/1.6)	<b>1560</b> - 1.2 359 (400-1.2/1.6)	<b>1580</b> - 1.2 379 (400-1.2/2.0)	<b>1620</b> - 1.6 419 (500-1.6/2.4)	
① CIRCLING	<b>1700</b> - 1.6 497 (500-1.6)	<b>1710</b> - 1.6 507 (600-1.6)	<b>1970</b> - 3.6 767 (800-3.6)	<b>2120</b> - 4.8 917 (1000-4.8)	<b>2220</b> - 4.8 1017 (1100-4.8)

**RNAV (GNSS) RWY 07R**

48°42.94'N  
011°32.02'E

**INGOLSTADT/MANCHING (ETSI)**

CHANGE: ALS LENGTH (27/1/1)

AFSBW 12 JAN 2012