

**PANS-OPS INSTRUMENT APPROACH CHART**

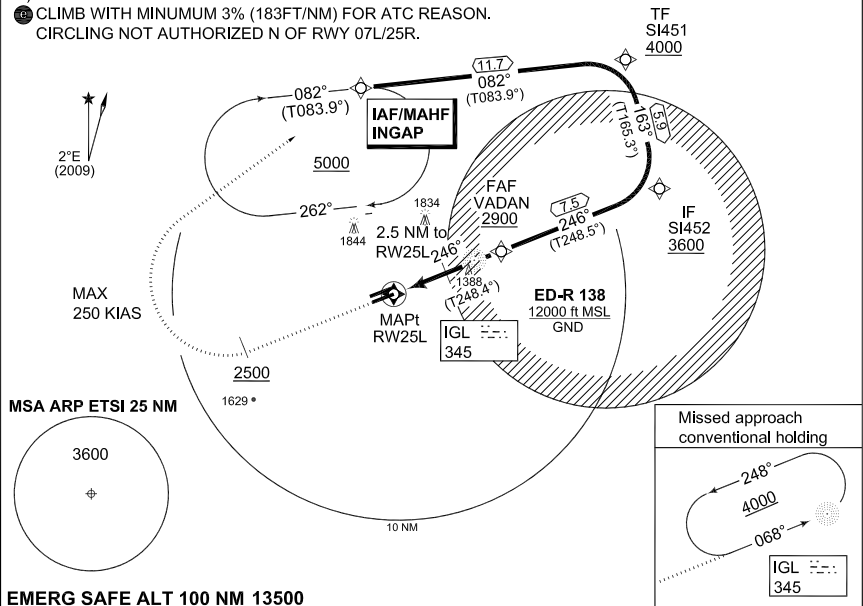
AD ELEV 1203

**RNAV (GNSS) RWY 25L INGOLSTADT/MANCHING (ETSI)**

MUENCHEN RADAR 242.200		INGO RADAR 278.100 120.600 125.575			INGO TWR 373.200 125.250			
NDB IGL 345	APP COURSE 246°	FAF ALT 2900	GS 3.1°	MDA <b>see CAT</b>	TDZE 1197	ALS-Length 900 M	LDA 9646	

**NOTE:**

- a) GPS QUALIFICATION REQUIRED.
- b) MISSED APCH TURN LIMITED TO KIAS 250.
- c) NO TURN BEFORE MAPt.
- d) MISSED APCH:  
 ● CLIMB WITH MINIMUM 3% (183FT/NM) FOR ATC REASON.  
 ○ CIRCLING NOT AUTHORIZED N OF RWY 07L/25R.



**EMERG SAFE ALT 100 NM 13500**

**MISSED APPROACH**

Climb on track 246°, when passing 2500 ft turn right direct INGAP. Climb to 5000 ft and enter holding.

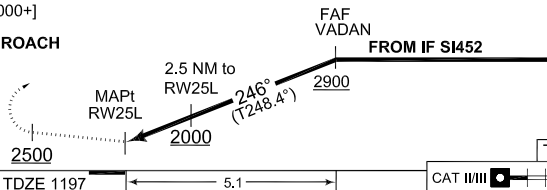
[M246, A2500+; R] - INGAP [A5000+]

TA 5000

	1	2	3	4	5	Distance THR
	1550	1880	2210	2540	2870	Altitude

**CONVENTIONAL MISSED APPROACH**

Climb on track 246°, when passing 2500 ft turn right inbound IGL NDB and enter published holding at 4000 ft.



CHANGE: ALS LENGTH (27/1/1)

CATEGORY	A	B	C	D	E
<b>MINIMA ACCORDING TO MIPS CRITERIA</b>					
GNSS 25L	1570 - 0.8 373 (400-0.8/1.6)	1570 - 1.2 373 (400-1.2/1.6)	1570 - 1.2 373 (400-1.2/2.0)	1610 - 1.6 413 (500-1.6/2.4)	
● CIRCLING	1700 - 1.6 497 (500-1.6)	1710 - 1.6 507 (600-1.6)	1970 - 3.6 767 (800-3.6)	2120 - 4.8 917 (1000-4.8)	2220 - 4.8 1017 (1100-4.8)

**RNAV (GNSS) RWY 25L**

48°42.94'N  
011°32.02'E

**INGOLSTADT/MANCHING (ETSI)**

AFSBw 12 JAN 2012