

MIPS INSTRUMENT APPROACH CHART

AD ELEV 1203

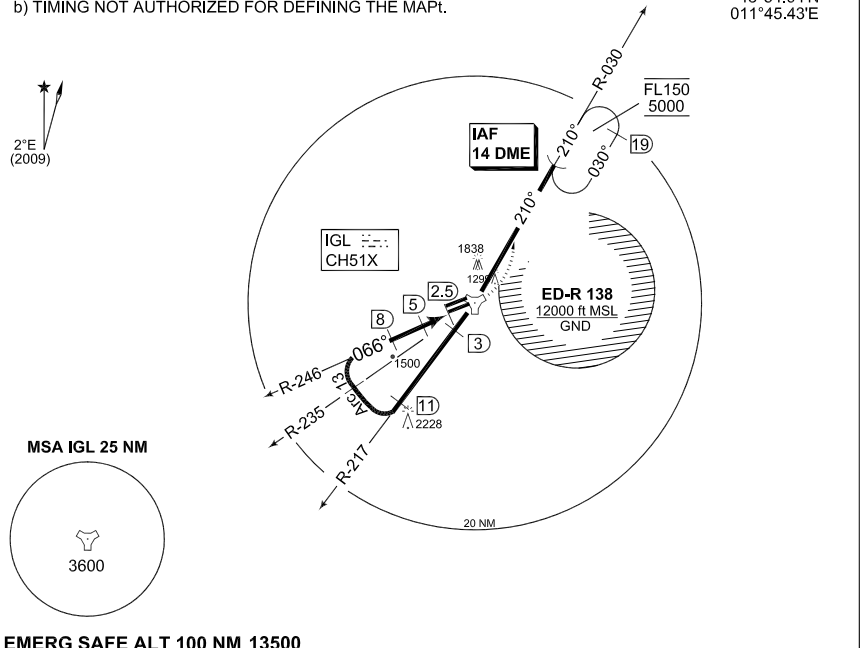
TACAN RWY 07R INGOLSTADT/MANCHING (ETS)

MUNCHEN RADAR 242.200		INGO RADAR 278.100 120.600 125.575		INGO TWR 373.200 125.250			
TACAN IGL CH51X	APP COURSE 066°	FAF ALT 3000	Descent GR 5.2%	MDA see CAT	TDZE 1201	ALS-Length 855 M	LDA 9646

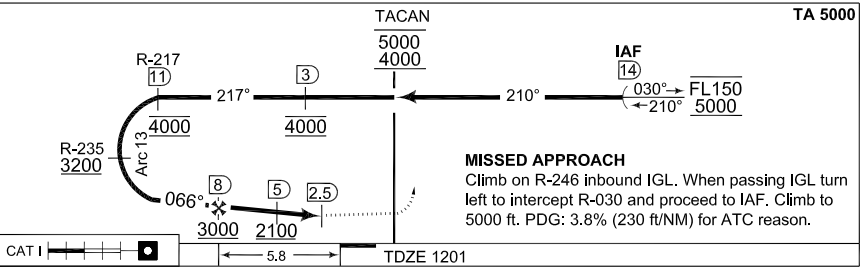
NOTE:

- CIRCLING NOT AUTHORIZED N OF RWY 07L/25R.
- b) TIMING NOT AUTHORIZED FOR DEFINING THE MAPT.

IAF
48°54.94'N
011°45.43'E



EMERG SAFE ALT 100 NM 13500



MISSED APPROACH
Climb on R-246 inbound IGL. When passing IGL turn left to intercept R-030 and proceed to IAF. Climb to 5000 ft. PDG: 3.8% (230 ft/NM) for ATC reason.

CATEGORY	A	B	C	D	E
TACAN 07R	1560 - 0.8 359 (400-0.8/1.6)		1560 - 1.2 359 (400-1.2/1.6)	1560 - 1.2 359 (400-1.2/2.0)	1570 - 1.2 369 (400-1.2/2.0)
● CIRCLING	1700 - 1.6 497 (500-1.6)	1710 - 1.6 507 (600-1.6)	1970 - 3.6 767 (800-3.6)	2120 - 4.8 917 (1000-4.8)	2220 - 4.8 1017 (1100-4.8)

PAR 07R **1401 - 0.8 200 (200-0.8/1.2)** GS 3.0°

TACAN RWY 07R

48°42.94'N
011°32.02'E

INGOLSTADT/MANCHING (ETS)

CHANGE: ALS LENGTH (27/1/1)

AFSBw 12 JAN 2012