

MIPS INSTRUMENT APPROACH CHART

AD ELEV 1203

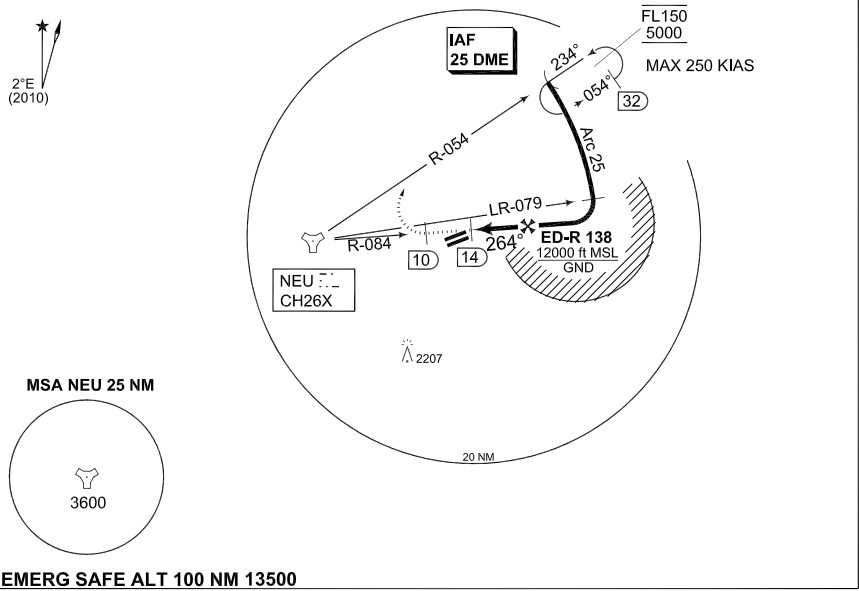
TACAN RWY 25R INGOLSTADT/MANCHING (ETS)

MUENCHEN RADAR 242.200		INGO RADAR 278.100 120.600 125.575		INGO TWR 373.200 125.250			
TACAN NEU CH26X	APP COURSE 264°	FAF ALT 3000	Descent GR 5.2%	MDA 1960	TDZE 1192	ALS-Length 900 M	LDA 7401

NOTE:

- ⊘ CIRCLING NOT AUTHORIZED N OF RWY 07L/25R.
- b) TIMING NOT AUTHORIZED FOR DEFINING THE MAP.

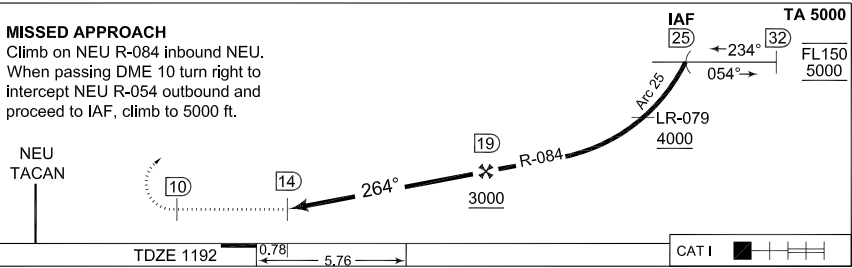
IAF
48°56.65'N
011°44.10'E



EMERG SAFE ALT 100 NM 13500

MISSED APPROACH

Climb on NEU R-084 inbound NEU. When passing DME 10 turn right to intercept NEU R-054 outbound and proceed to IAF, climb to 5000 ft.



CHANGE: ALS LENGTH (27/1/1)

CATEGORY	A	B	C	D	E
TACAN 25R	1960 - 1.6 768 (800-1.6)	1960 - 2.0 768 (800-2.0)	1960 - 3.6 768 (800-3.6)	1960 - 4.0 768 (800-4.0)	1960 - 4.4 768 (800-4.4)
⊘ CIRCLING	1960 - 1.6 757 (800-1.6)	1960 - 1.6 757 (800-1.6)	1970 - 3.6 767 (800-3.6)	2120 - 4.8 917 (1000-4.8)	2220 - 4.8 1017 (1100-4.8)

TACAN RWY 25R

48°42.94'N
011°32.02'E

INGOLSTADT/MANCHING (ETS)

AFSBw 12 JAN 2012