

**TERPS INSTRUMENT APPROACH CHART**

AD ELEV 2044

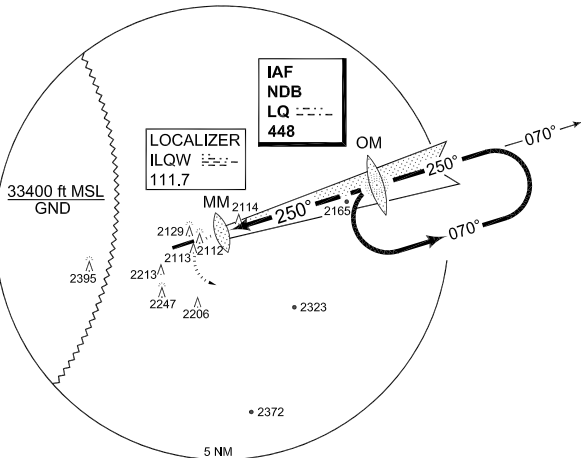
**NDB/ILS RWY 25 LANDSBERG/LECH (ETSA)**

MUNICHEN RADAR 259.000 129.450		LANDSBERG RADAR 278.900 309.200 130.500				LANDSBERG TWR 315.700 140.075	
NDB / LOCALIZER LQ 448 / ILQW 111.7	APP COURSE 250°	GS INTCP ALT 3500	GS 3.0°	DA 2243	TDZE 2043	ALS-Length 445 M	LDA 6778

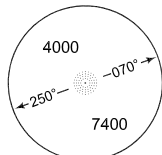
**WARNING:**

- a) HIRTA SENSITIVE ACFT, CHECK LIMITATIONS
- (b)** CIRCLING CAT E: REMAIN WITHIN CONTROL ZONE

IAF  
48°05.69'N  
011°01.13'E

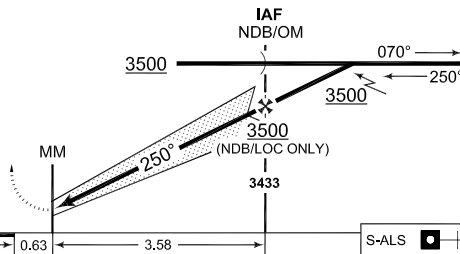


**MSA LQ 25 NM**



**EMERG SAFE ALT 100 NM 15300**

<b>LOC: FAF - MAP 3.58 NM</b>					<b>TA 5000</b>
Knots	60	90	120	150	
Min:Sec	3:35	2:23	1:47	1:26	1:11
<b>MISSED APPROACH</b> Turn left, climbing to 3500 ft and rehome NDB.					
<b>NDB: MAP at THR</b>					
<b>FAF - MAP 4.21 NM</b>					<b>GS 3.0°</b> <b>TCH 49</b>
Knots	60	90	120	150	
Min:Sec	4:13	2:48	2:06	1:41	1:24
TDZE 2043					S-ALS <input checked="" type="checkbox"/>



CHANGE: ALS LENGTH (27/1/1)

CATEGORY	A	B	C	D	E
S-ILS 25	<b>2243 - 0.8 200 (200-0.8/1.2)</b>				<b>N/A</b>
S-LOC 25	<b>2450 - 0.8 407 (500-0.8/1.6)</b>		<b>2450 - 1.2 407 (500-1.2/1.6)</b>		<b>N/A</b>
S-NDB 25	<b>2480 - 0.8 437 (500-0.8/1.6)</b>		<b>2480 - 1.2 437 (500-1.2/2.0)</b> (500-2.4)	<b>2480 - 1.6 437 (500-1.6/2.4)</b> (600-3.2)	
<b>(b)</b> CIRCLING	<b>2520 - 1.6 476 (500-1.6)</b>		<b>2520 - 2.4 476 (500-2.4)</b>	<b>2600 - 3.2 556 (600-3.2)</b>	<b>2700 - 3.6 656 (700-3.6)</b>

**NDB/ILS RWY 25**

48°04.23'N  
010°54.36'E

**LANDSBERG/LECH (ETSA)**

AFSBw 12 JAN 2012