

**TERPS
INSTRUMENT APPROACH CHART**

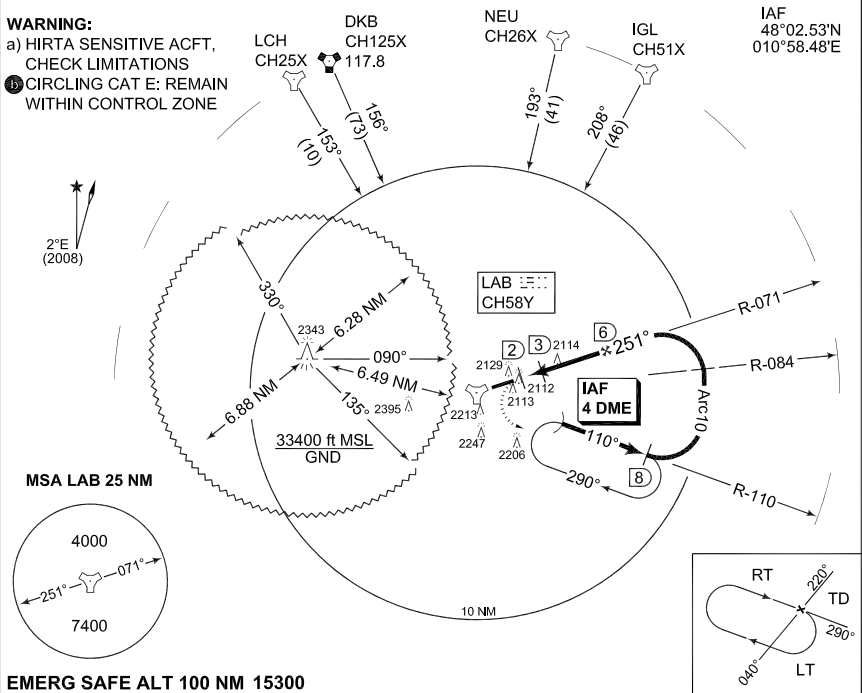
AD ELEV 2044

**TACAN 2 RWY 25
LANDSBERG/LECH (ETSA)**

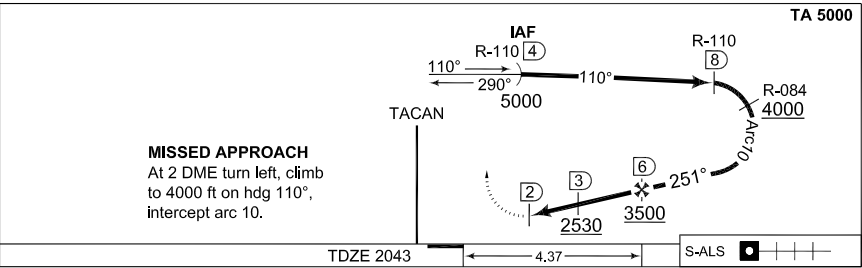
MUNICHEN RADAR 259.000 129.450		LANDSBERG RADAR 278.900 309.200		LANDSBERG TWR 315.700 140.075			
TACAN LAB CH58Y	APP COURSE 251°	FAF ALT 3500	MDA 2420	TDZE 2043	ALS-Length 445 M	LDA 6778	

WARNING:

- a) HIRTA SENSITIVE ACFT,
CHECK LIMITATIONS
- Ⓢ CIRCLING CAT E: REMAIN
WITHIN CONTROL ZONE



EMERG SAFE ALT 100 NM 15300



CATEGORY	A	B	C	D	E
S-TACAN 25	2420 - 0.8 377 (400-0.8/1.6)		2420 - 1.2 377 (400-1.2/1.6)	2420 - 1.2 377 (400-1.2/2.0)	
Ⓢ CIRCLING	2520 - 1.6 476 (500-1.6)		2520 - 2.4 476 (500-2.4)	2600 - 3.2 556 (600-3.2)	2700 - 3.6 656 (700-3.6)
PAR 25	2243 - 0.8 200 (200-0.8/1.2) GS 3.0°				

CHANGE: ALS LENGTH (27/1/1)

AFSBw 12 JAN 2012

TACAN 2 RWY 25

48°04.23'N
010°54.36'E

LANDSBERG/LECH (ETSA)