

**MIPS
INSTRUMENT APPROACH CHART**

AD ELEV 1822

**TACAN RWY 03
LECHFELD (ETSL)**

MUNCHEN RADAR 259.000 129.450		LECHFELD RADAR 358.650 278.050 129.025 123.300			LECHFELD TWR 296.725 135.150 122.100		
TACAN LCH CH25X	APP COURSE 021°	FAF ALT 4700	Descent GR 5.7%/3.3°	MDA 2260	TDZE 1822	ALS-Length 700 M	LDA 8784

WARNING:

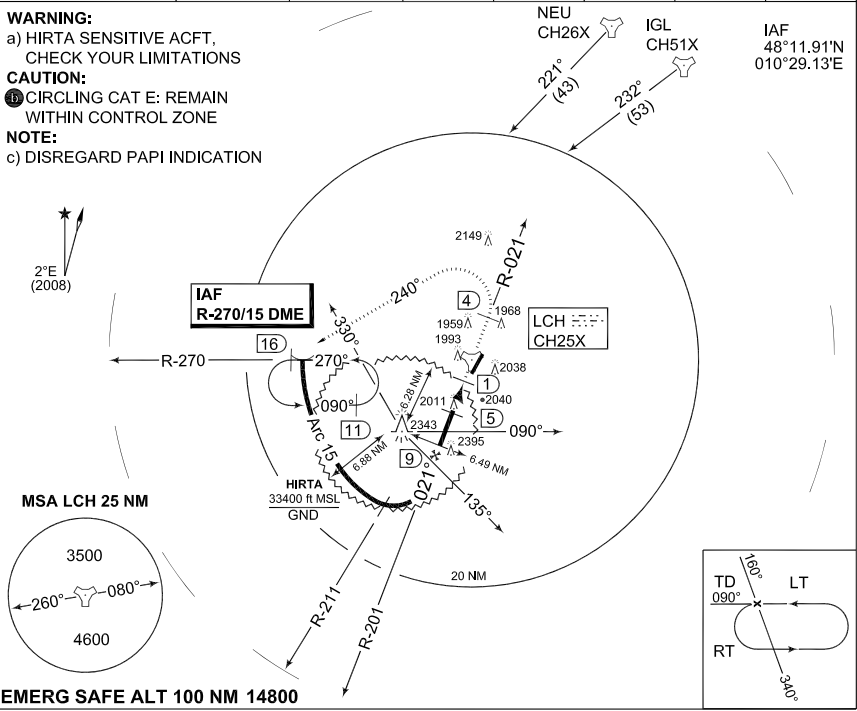
a) HIRTA SENSITIVE ACFT,
CHECK YOUR LIMITATIONS

CAUTION:

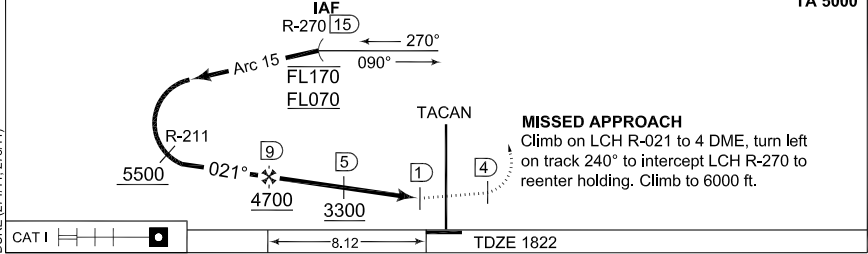
① CIRCLING CAT E: REMAIN
WITHIN CONTROL ZONE

NOTE:

c) DISREGARD PAPI INDICATION



TA 5000



CATEGORY	A	B	C	D	E
S-TACAN 03	2260 - 0.8 438 (500-0.8/1.6)		2260 - 1.2 438 (500-1.2/2.0)	2260 - 1.6 438 (500-1.6/2.4)	
① CIRCLING	NOT AUTHORIZED		2300 - 2.4 479 (500-2.4)	2380 - 3.2 559 (600-3.2)	
PAR 03	2022 - 0.8 200 (200-0.8/1.2) GS 3.0°				

TACAN RWY 03

48°11.13'N
010°51.67'E

LECHFELD (ETSL)

CHANGE: REVISED PROCEDURE (27111, 27311)

AFSBw 12 JAN 2012