

**MIPS
INSTRUMENT APPROACH CHART**

AD ELEV 1822

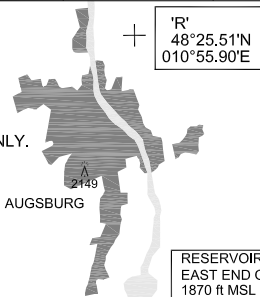
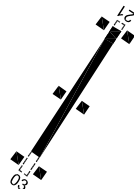
**HPMA IAA-B RWY 03
LECHFELD (ETSL)**

LANDSBERG RADAR 278.900 309.200 344.000			LECHFELD RADAR 358.650 278.050 129.025			LECHFELD TWR 296.725 135.150		
APP COURSE 331°	FAF ALT 4000	Descent GR 5.2%/320ft/NM	MDA 2380	TDZE 1822	ALS-Length 700 M	LDA 8784		

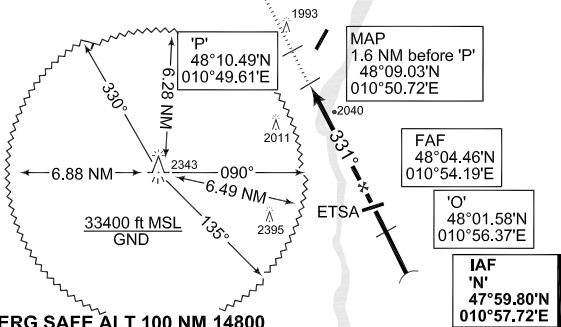
NOTE:

- a) CIRCLING NOT AUTHORIZED W OF RWY 03/21.
- b) NON-STANDARD PROCEDURE: PROCEDURE NOT ALIGNED WITH RWY.
- c) FOR FAMILIARIZED AIRCREWS ONLY.

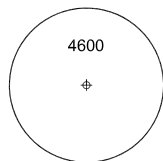
ARA REFLECTORS



RESERVOIR
EAST END OF DAM
1870 ft MSL
48°06.89'N
010°51.85'E

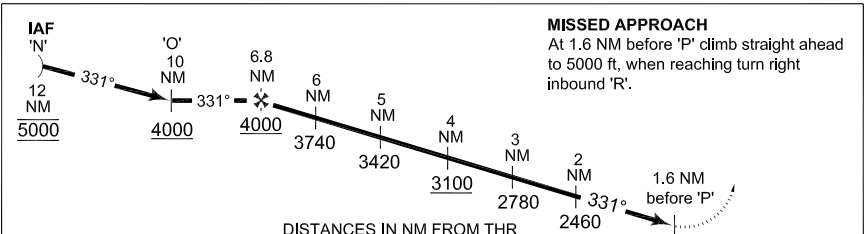


MSA ETSL ARP 25 NM



TA 5000

EMERG SAFE ALT 100 NM 14800



MISSED APPROACH

At 1.6 NM before 'P' climb straight ahead to 5000 ft, when reaching turn right inbound 'R'.

DISTANCES IN NM FROM THR

CAT I	6.8	TDZE 1822
-------	-----	-----------

CATEGORY	HPMA
IAA-B 03	2380 - 3.2 558 (600-3.2)

CHANGE: ALS LENGTH (27/1/11)

AFSBw 12 JAN 2012

HPMA IAA-B RWY 03

48°11.13'N
010°51.67'E

LECHFELD (ETSL)