

**TERPS
INSTRUMENT APPROACH CHART**

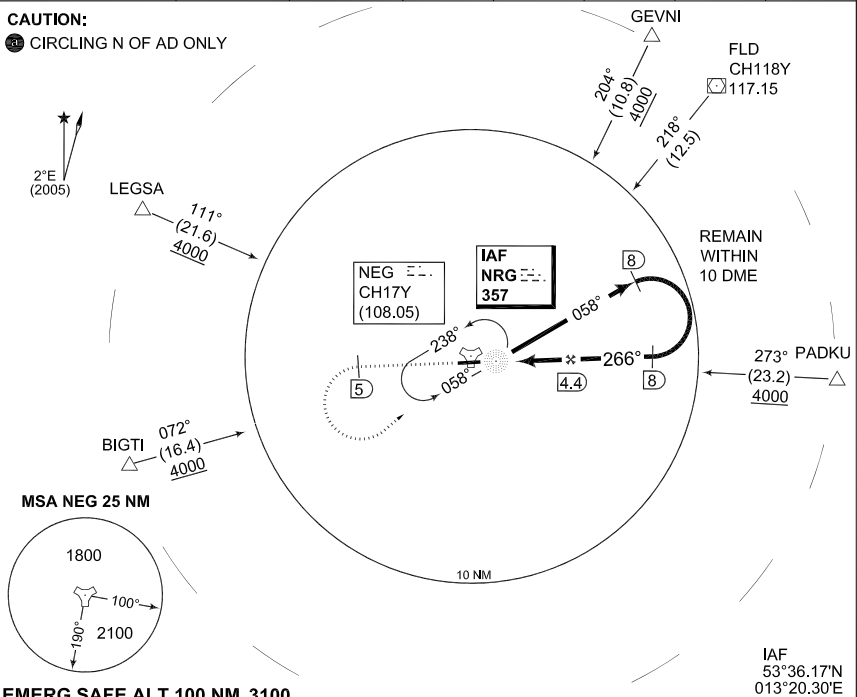
AD ELEV 228

**NDB-DME RWY 27
NEUBRANDENBURG (ETNU)**

BREMEN RADAR 373.975 134.650	NEUBRANDENBURG RADAR 358.750 123.300	NEUBRANDENBURG TWR 369.350 119.175
NDB/DME NRG 357/NEG CH17Y	APP COURSE 266°	FAF ALT 1420
	MDA 600	TDZE 228
	ALS-Length 840 M	LDA 7522

CAUTION:

● CIRCLING N OF AD ONLY

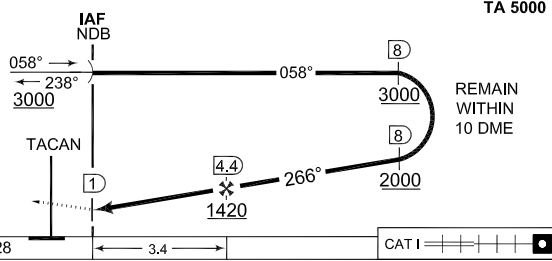


EMERG SAFE ALT 100 NM 3100

IAF
53°36.17'N
013°20.30'E

FAF - MAP 3.4 NM					
Knots	60	90	120	150	180
Min:Sec	3:24	2:16	1:42	1:22	1:08

MISSED APPROACH
Climb on RWY heading to 3000 ft. When passing 5 DME NEG, LT, rehome NDB, enter holding.



TA 5000

CATEGORY	TDZE 228					CAT I
	A	B	C	D	E	
NDB-DME 27	600 - 0.8 372 (400-0.8/1.6)		600 - 1.2 372 (400-1.2/1.6)	600 - 1.2 372 (400-1.2/2.0)		
● CIRCLING	660 - 1.6 432 (500-1.6)	760 - 1.6 532 (600-1.6)	760 - 2.4 532 (600-2.4)	780 - 2.8 552 (600-2.8)		

NDB-DME RWY 27

53°36.13'N
013°18.36'E

NEUBRANDENBURG (ETNU)

CHANGE: ALS LENGTH (27/11)

AFSBw 12 JAN 2012