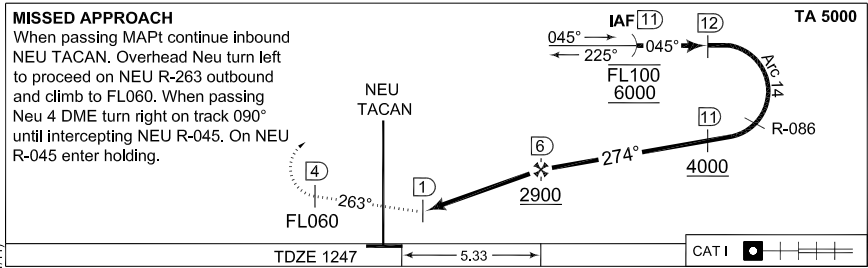
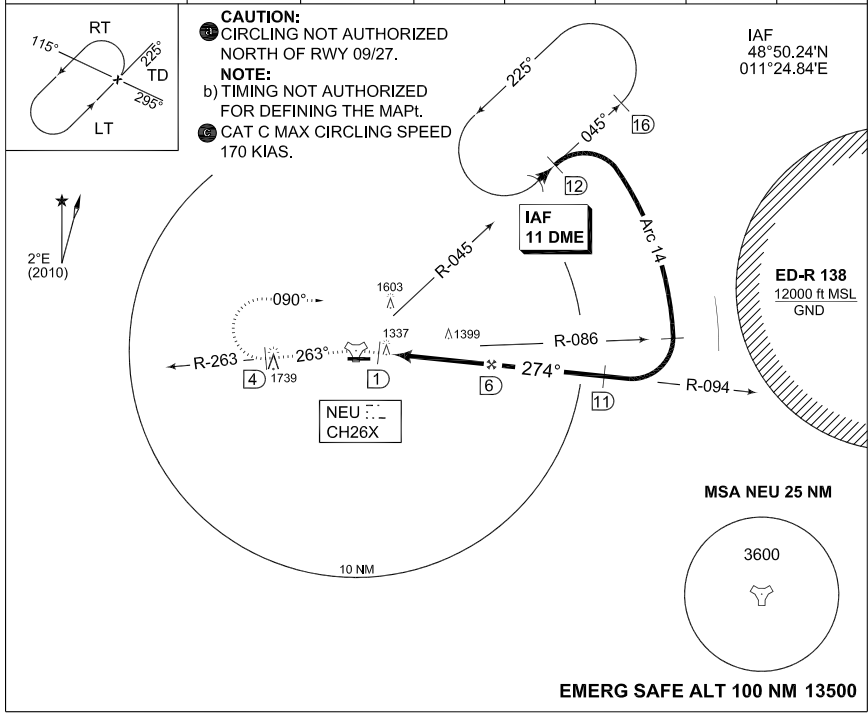


**MIPS
INSTRUMENT APPROACH CHART**

**TACAN RWY 27
NEUBURG (ETSN)**

AD ELEV 1250

MUENCHEN RADAR 242.200	DONAU RADAR 275.650 130.150	DONAU TWR 369.100 129.850					
TACAN NEU CH26X	APP COURSE 274°	FAF ALT 2900	Descent GR 5.2%	MDA 1590	TDZE 1247	ALS-Length 975 M	LDA 8005



	TDZE 1247	5.33		CAT I	
CATEGORY	A	B	C	D	E
TACAN 27	1590 - 0.8 343 (400-0.8/1.6)		1590 - 1.2 343 (400-1.2/1.6)	1590 - 1.2 343 (400-1.2/2.0)	
CIRCLING	1740 - 1.6 490 (500-1.6)	1960 - 1.6 710 (800-1.6)	2140 - 4.4 890 (900-4.4)	2520 - 4.8 1270 (1300-4.8)	2620 - 4.8 1370 (1400-4.8)
PAR 27	1447 - 0.8 200 (200-0.8/1.2) GS 3.0°				

TACAN RWY 27

48°42.66'N
011°12.69'E

NEUBURG (ETSN)

CHANGE: ALS LENGTH (27/1/1)

AFSBw 12 JAN 2012