

**MIPS
INSTRUMENT APPROACH CHART**

**ARA/IAA RWY 27
NEUBURG (ETSN)**

AD ELEV 1250

MIUNCHEN RADAR 242.200	DONAU RADAR 275.650 130.150	DONAU TWR 369.100 129.850					
APP COURSE 271°	FAF ALT 4000	Descent GR 5.27%	MDA 1590	TDZE 1247	ALS-Length 975 M	LDA 8005	

WARNING:

a) PROCEDURE NOT AUTHORIZED
WHEN ED-R138 IS ACTIVE.

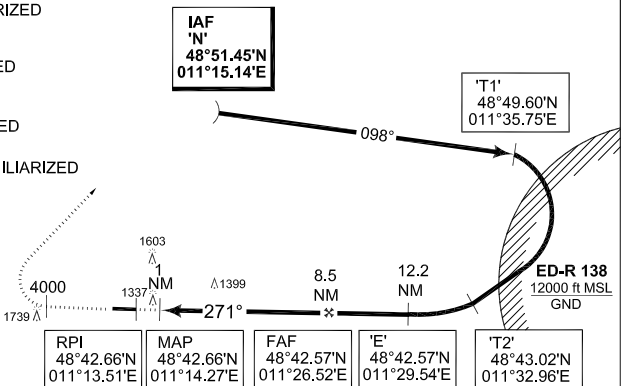
CAUTION:

b) CIRCLING NOT AUTHORIZED
NORTH OF RWY 09/27.

NOTE:

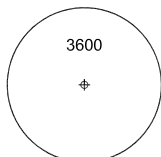
c) CAT C MAX CIRCLING SPEED
170 KIAS.

d) IAA PROCEDURE FOR FAMILIARIZED
AIRCREWS ONLY.



RPI 48°42.66'N 011°13.51'E	MAP 48°42.66'N 011°14.27'E	FAF 48°42.57'N 011°26.52'E	'E' 48°42.57'N 011°29.54'E	'T2' 48°43.02'N 011°32.96'E
----------------------------------	----------------------------------	----------------------------------	----------------------------------	-----------------------------------

MSA ETSN ARP 25 NM



ARA REFLECTORS

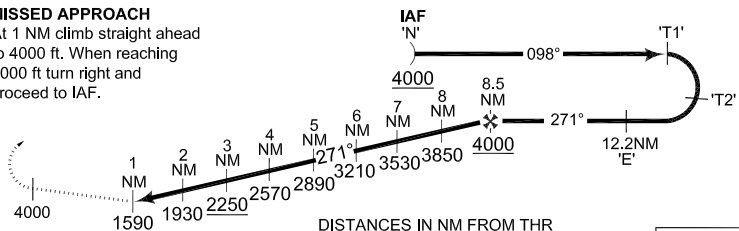


EMERG SAFE ALT 100 NM 13500

MISSED APPROACH

At 1 NM climb straight ahead
to 4000 ft. When reaching
4000 ft turn right and
proceed to IAF.

TA 5000



DISTANCES IN NM FROM THR

TDZE 1247

CAT I

CATEGORY	A	B	C	D	E
ARA/IAA 27	1590 - 0.8 343 (400-0.8/1.6)			1590 - 1.2 343 (400-1.2/2.0)	
CIRCLING	1740 - 1.6 490 (500-1.6)	1960 - 1.6 710 (800-1.6)	2140 - 4.4 890 (900-4.4)	2520 - 4.8 1270 (1300-4.8)	2620 - 4.8 1370 (1400-4.8)

CHANGE: ALS LENGTH (27/1/1)

AFSBw 12 JAN 2012

ARA/IAA RWY 27

48°42.66'N
011°12.69'E

NEUBURG (ETSN)