

**MIPS  
INSTRUMENT APPROACH CHART**

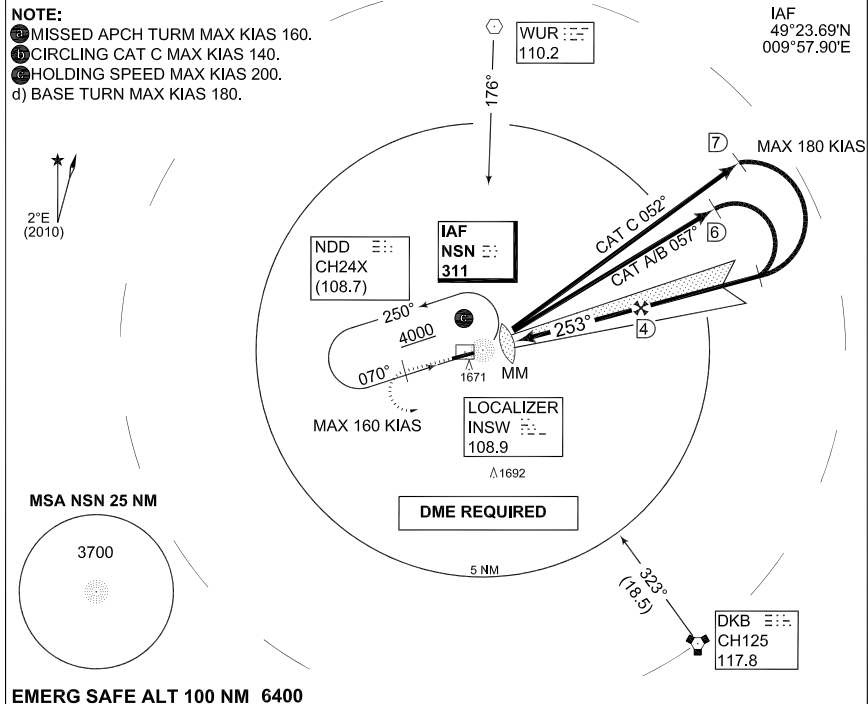
**ILS or LOC RWY 25  
NIEDERSTETTEN (ETHN)**

LANGEN RADAR 398.650 135.725		STETTEN RADAR 251.250 139.300 135.600			STETTEN TWR 280.600 122.100		
LOCALIZER/NDB INSW 108.9/NSN 311	APP COURSE 253°	GS INTCP ALT 3000	GS 3.4°/5.9%	DA <b>see CAT</b>	TDZE 1535	ALS-Length 600 M	LDA 3979

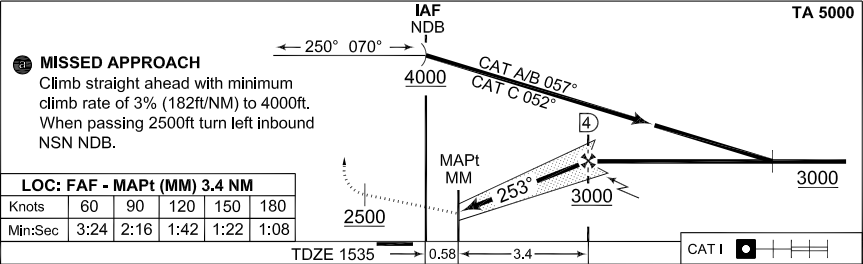
**NOTE:**

- ① MISSED APCH TURM MAX KIAS 160.
- ② CIRCLING CAT C MAX KIAS 140.
- ③ HOLDING SPEED MAX KIAS 200.
- d) BASE TURN MAX KIAS 180.

IAF  
49°23.69'N  
009°57.90'E



**EMERG SAFE ALT 100 NM 6400**



CATEGORY	A	B	C
ILS 25	<b>1735</b> - 0.8/750 200 (200-0.8/1.2)	<b>1749</b> - 0.8/800 214 (300-0.8/1.2)	<b>1758</b> - 0.8/800 223 (300-0.8/1.2)
LOC 25	<b>1910</b> - 0.8 375 (400-0.8/1.6)		<b>1910</b> - 1.2 375 (400-1.2/1.6)
② CIRCLING	<b>1970</b> - 1.6 434 (500-1.6)	<b>1990</b> - 1.6 454 (500-1.6)	<b>2100</b> - 2.4 564 (600-2.4)

**ILS or LOC RWY 25**

49°23.51'N  
009°57.49'E

**NIEDERSTETTEN (ETHN)**

CHANGE: ALS LENGTH (27/1/11)

AFSBw 12 JAN 2012