

**MIPS
INSTRUMENT APPROACH CHART**

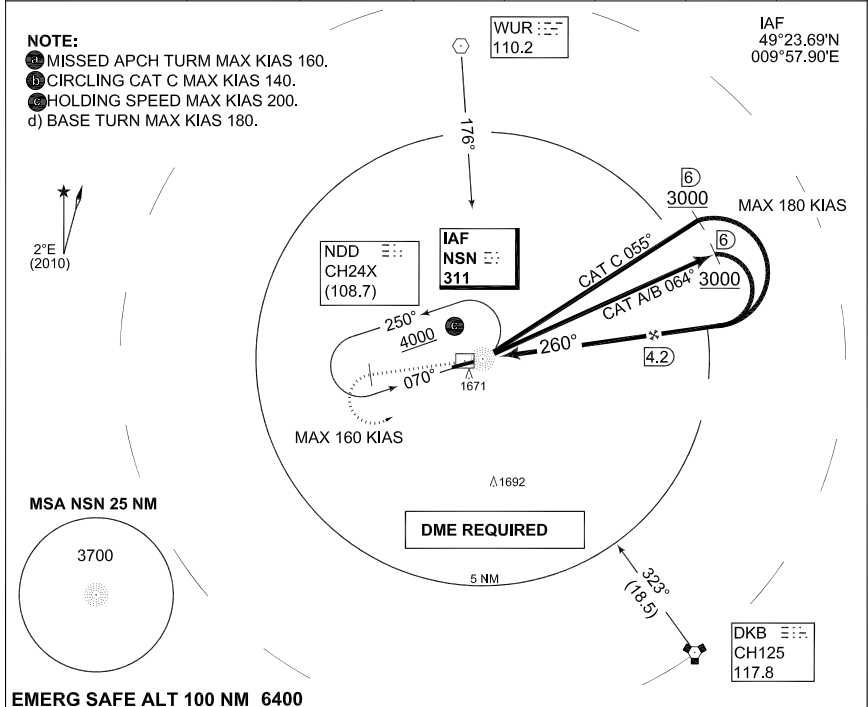
**NDB Z RWY 25
NIEDERSTETTEN (ETHN)**

AD ELEV 1536

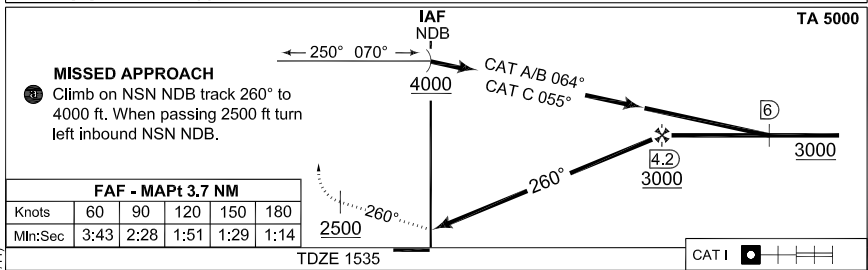
LANGEN RADAR		STETTEN RADAR				STETTEN TWR		
398.650	135.725	251.250	139.300	135.600		280.600	122.100	
NDB NSN 311	APP COURSE 260°	FAF ALT 3000	Descent GR 5.9%/3.4°	MDA see CAT	TDZE 1535	ALS-Length 600 M	LDA 3979	

- NOTE:**
- a) MISSED APCH TURM MAX KIAS 160.
 - b) CIRCLING CAT C MAX KIAS 140.
 - c) HOLDING SPEED MAX KIAS 200.
 - d) BASE TURN MAX KIAS 180.

IAF
49°23.69'N
009°57.90'E



EMERG SAFE ALT 100 NM 6400



MISSED APPROACH

- a) Climb on NSN NDB track 260° to 4000 ft. When passing 2500 ft turn left inbound NSN NDB.

FAF - MAPt 3.7 NM					
Knots	60	90	120	150	180
Min:Sec	3:43	2:28	1:51	1:29	1:14

TDZE 1535

CAT I

CATEGORY	A	B	C
NDB Z 25	1970 - 1.2 435 (500-1.2/1.6)		2000 - 1.6 465 (500-1.6/2.0)
b) CIRCLING	1970 - 1.6 434 (500-1.6)	1990 - 1.6 454 (500-1.6)	2100 - 2.4 564 (600-2.4)

CHANGE: ALS LENGTH (27/1/11)

AFSBw 12 JAN 2012

NDB Z RWY 25

49°23.51'N
009°57.49'E

NIEDERSTETTEN (ETHN)