

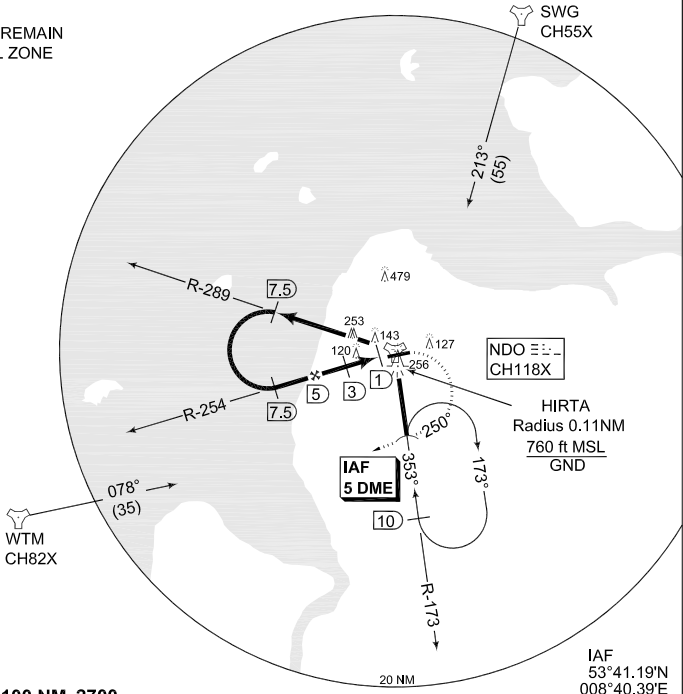
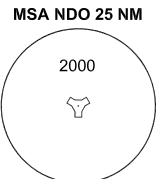
**TERPS
INSTRUMENT APPROACH CHART**

**TACAN RWY 08
NORDHOLZ (ETMN)**

AD ELEV 74

BREMEN RADAR 371.750 124.075		NORDHOLZ RADAR 278.350 129.850		NORDHOLZ TWR 315.700 142.900			
TACAN NDO CH118X	APP COURSE 074°	FAF ALT 1600	MDA 400	TDZE 74	ALS-Length 900 M	LDA 8002	

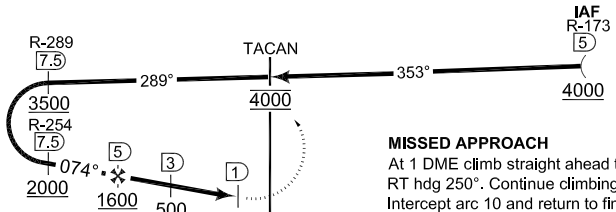
CAUTION:
CIRCLING CAT E: REMAIN WITHIN CONTROL ZONE



EMERG SAFE ALT 100 NM 2700

IAF 53°41.19'N
008°40.39'E

TA 5000



MISSED APPROACH
At 1 DME climb straight ahead to 1000 ft, RT hdg 250°. Continue climbing to 2500 ft. Intercept arc 10 and return to final.



CATEGORY	A	B	C	D	E
S-TACAN 08	400 - 0.8 326 (400-0.8/1.6)		400 - 1.2 326 (400-1.2/1.6)		400 - 1.2 326 (400-1.2/2.0)
CIRCLING	560 - 1.6 486 (500-1.6)		560 - 2.4 486 (500-2.4)	640 - 3.2 566 (600-3.2)	780 - 4.0 706 (800-4.0)
PAR 08	274 - 0.8 200 (200-0.8/1.2) GS 3.0°				

CHANGE: ALS LENGTH (27/1/1)

AFSBw 12 JAN 2012

TACAN RWY 08

53°46.06'N
008°39.51'E

NORDHOLZ (ETMN)