

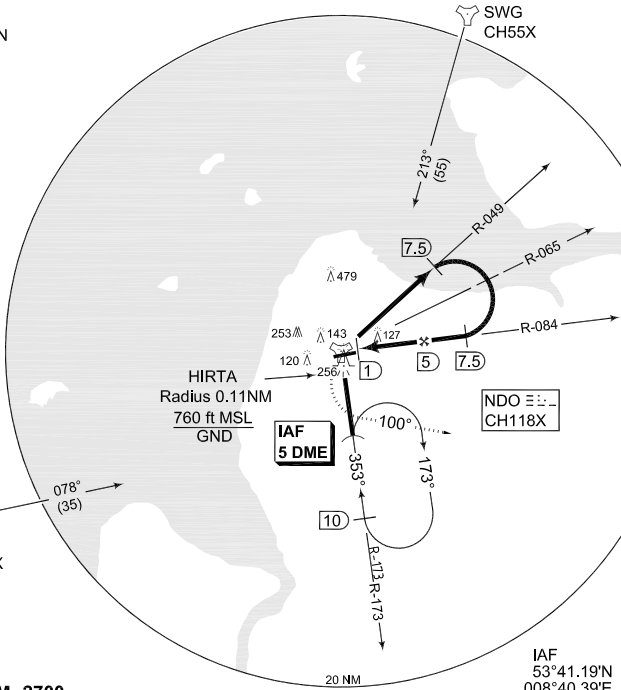
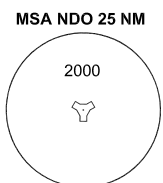
**TERPS INSTRUMENT APPROACH CHART**

**TACAN RWY 26  
NORDHOLZ (ETMN)**

BREMEN RADAR 371.750 124.075		NORDHOLZ RADAR 278.350 129.850		NORDHOLZ TWR 315.700 142.900			
TACAN NDO CH118X	APP COURSE 264°	FAF ALT 1600		MDA 380	TDZE 67	ALS-Length 900 M	LDA 8002

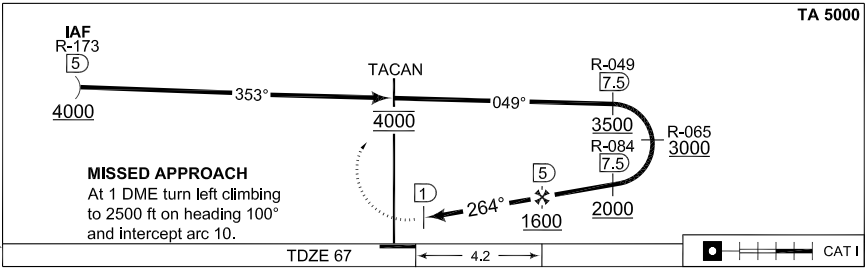
AD ELEV 74

**CAUTION:**  
**CIRCLING CAT E: REMAIN WITHIN CONTROL ZONE**



**EMERG SAFE ALT 100 NM 2700**

IAF  
53°41.19'N  
008°40.39'E



	TDZE 67		4.2		
CATEGORY	A	B	C	D	E
S-TACAN 26	380 - 0.8 313 (400-0.8/1.6)		380 - 1.2 313 (400-1.2/1.6)		
CIRCLING	560 - 1.6 486 (500-1.6)		560 - 2.4 486 (500-2.4)	640 - 3.2 566 (600-3.2)	780 - 4.0 706 (800-4.0)
PAR 26	267 - 0.8 200 (200-0.8/1.2) GS 3.0°				

CHANGE: ALS LENGTH (27/1/1)

AFSBw 12 JAN 2012

**TACAN RWY 26**

53°46.06'N  
008°39.51'E

**NORDHOLZ (ETMN)**