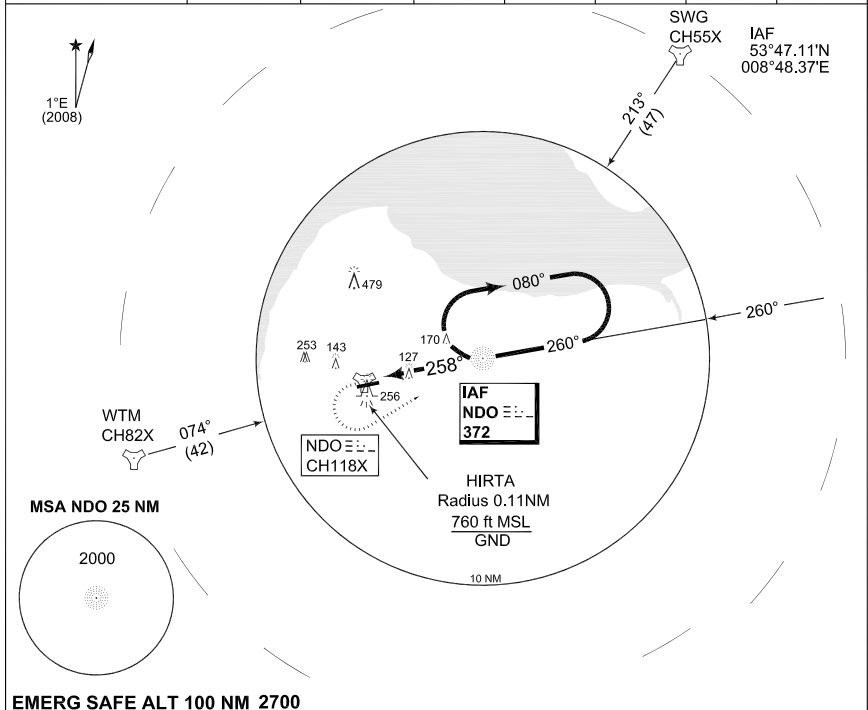


**TERPS
INSTRUMENT APPROACH CHART**

**NDB RWY 26
NORDHOLZ (ETMN)**

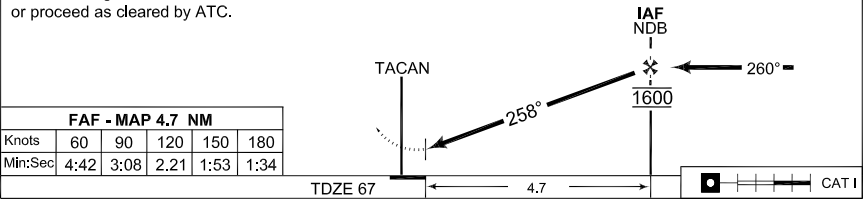
BREMEN RADAR 371.750 124.075		NORDHOLZ RADAR 278.350 129.850		NORDHOLZ TWR 315.700 142.900			
NDB NDO 372	APP COURSE 258°	FAF ALT 1600		MDA 480	TDZE 67	ALS-Length 900 M	LDA 8002



EMERG SAFE ALT 100 NM 2700

MISSED APPROACH
Climb straight ahead to 1600 ft before turning left to rehome NDB or proceed as cleared by ATC.

TA 5000



FAF - MAP 4.7 NM					
Knots	60	90	120	150	180
Min:Sec	4:42	3:08	2:21	1:53	1:34

CATEGORY	A	B	C	D	E
S-NDB 26	480 - 0.8 413 (500-0.8/1.6)		480 - 1.2 413 (500-1.2/2.0)		
CIRCLING	560 - 1.6 486 (500-1.6)		560 - 2.4 486 (500-2.4)		

CHANGE: ALS LENGTH (27/1/1)

AFSBw 12 JAN 2012

NDB RWY 26

53°46.06'N
008°39.51'E

NORDHOLZ (ETMN)