

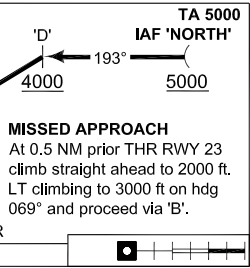
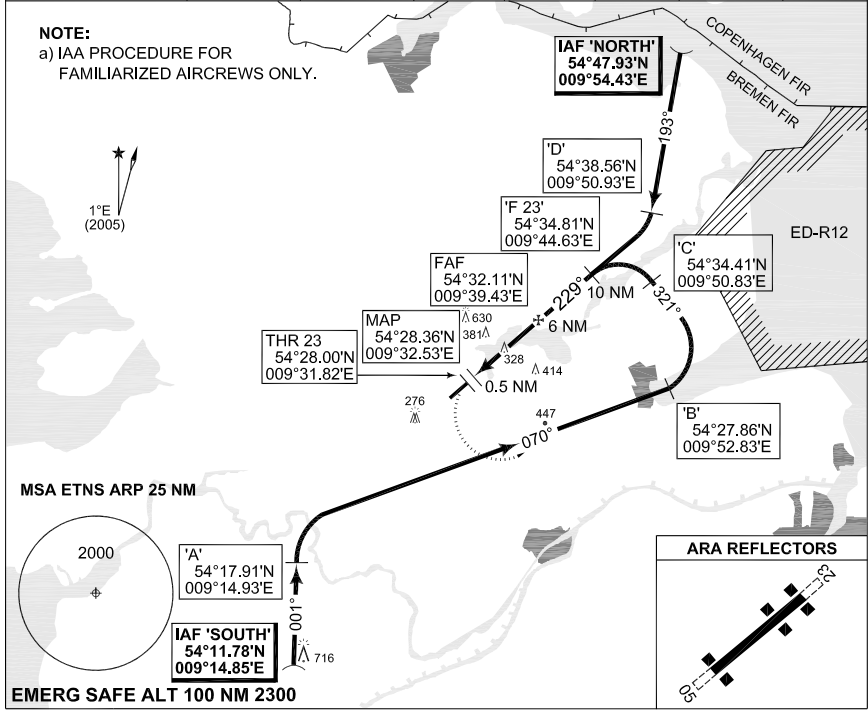
TERPS INSTRUMENT APPROACH CHART

AD ELEV 70

ARA/IAA RWY 23 SCHLESWIG (ETNS)

BREMEN RADAR 371.750 124.075		SCHLESWIG RADAR 244.450 142.050		SCHLESWIG TWR 358.900 135.150			
APP COURSE 229°		FAF ALT 2000		MDA 500	TDZE 69	ALS-Length UNKNOWN	LDA 8003

NOTE:
a) IAA PROCEDURE FOR FAMILIARIZED AIRCREWS ONLY.



MISSED APPROACH
At 0.5 NM prior THR RWY 23 climb straight ahead to 2000 ft. LT climbing to 3000 ft on hdg 069° and proceed via 'B'.

TDZE 69

CATEGORY	A	B	C	D	E
S-IAA 23	500 - 0.8 431 (500-0.8/1.6)		500 - 1.2 431 (500-1.2/2.0)	500 - 1.6 431 (500-1.6/2.4)	

ARA/IAA RWY 23

54°27.56'N
009°30.98'E

SCHLESWIG (ETNS)

CHANGE: ALS LENGTH (27/1/11)

AFSBw 12 JAN 2012