

**TERPS
INSTRUMENT APPROACH CHART**

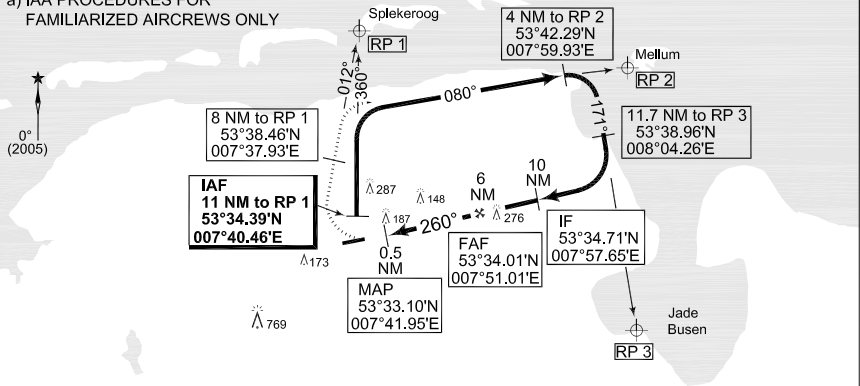
AD ELEV 26

**ARA/IAA RWY 26
WITTMUNDHAFEN (ETNT)**

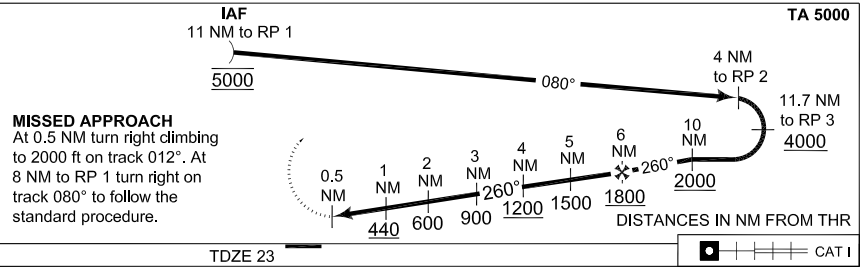
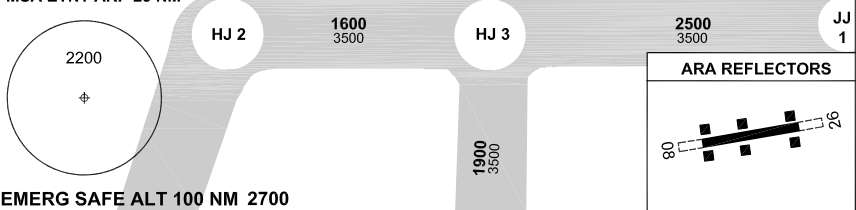
BREMEN RADAR 313.225 120.225		WITTMUND RADAR 248.050		WITTMUND TWR 386.875			
TACAN WTM CH82	APP COURSE 260°	FAF ALT 1800	MDA 440	TDZE 23	ALS-Length 900 M	LDA 8005	

NOTE:

a) IAA PROCEDURES FOR FAMILIARIZED AIRCREWS ONLY



MSA ETNT ARP 25 NM



TDZE 23 CAT I

CATEGORY	C	D	E
ARA/IAA 26	440 - 1.6 417 (500-1.6/2.0)		440 - 1.6 417 (500-1.6/2.4)

CHANGE: ALS LENGTH, NIFS (27/11, 270/11)

AFSBw 12 JAN 2012

ARA/IAA RWY 26

53°32.87'N
007°40.04'E

WITTMUNDHAFEN (ETNT)