

**MIPS  
INSTRUMENT APPROACH CHART**

AD ELEV 187

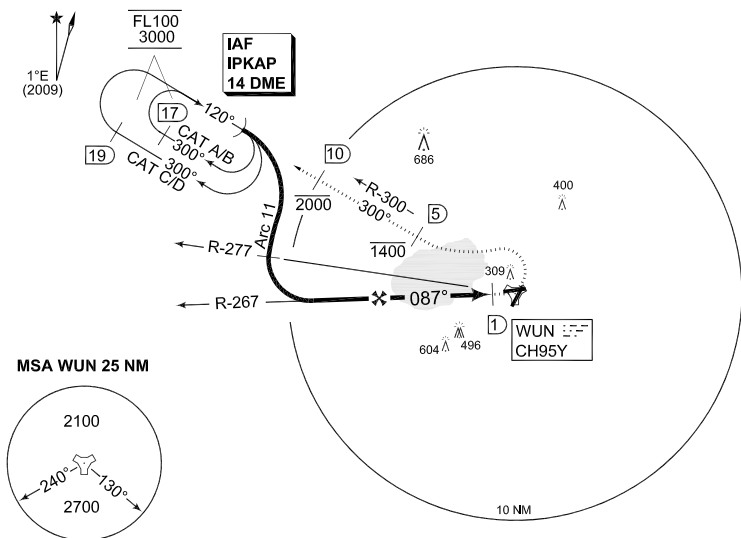
**TACAN RWY 08  
WUNSTORF (ETNW)**

BREMEN RADAR 259.725 131.325		WUNSTORF RADAR 389.400 142.500		123.300	WUNSTORF TWR 282.000 138.600		
TACAN WUN CH95Y	APP COURSE 087°	FAF ALT 1900	Descent GR 5.2%	MDA 550	TDZE 173	ALS-Length UNKNOWN	LDA 6157

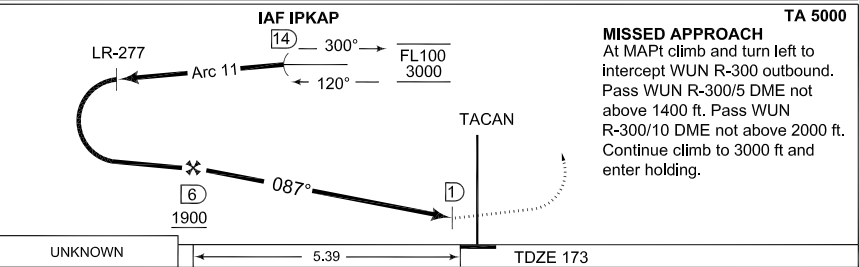
**NOTE:**

- a) NO TURN BEFORE MAPt.
- b) TIMING NOT AUTHORIZED FOR DEFINING MAPt.
- c) MISSED APCH TURN LIMITED TO MAX KIAS 220.

IAF  
52°34.37'N  
009°06.62'E



**EMERG SAFE ALT 100 NM 6100**



**MISSED APPROACH**  
At MAPt climb and turn left to intercept WUN R-300 outbound. Pass WUN R-300/5 DME not above 1400 ft. Pass WUN R-300/10 DME not above 2000 ft. Continue climb to 3000 ft and enter holding.

CHANGE, OBST. PROFILE (20112)

AFSBw 08 MAR 2012

UNKNOWN	5.39				TDZE 173
CATEGORY	A	B	C	D	E
TACAN 08	550 - 0.8 377 (400-0.8/1.6)		550 - 1.2 377 (400-1.2/1.6)	550 - 1.2 377 (400-1.2/2.0)	
CIRCLING	680 - 1.6 493 (500-1.6)	800 - 1.6 613 (700-1.6)	1000 - 4.0 813 (900-4.0)	1030 - 4.8 843 (900-4.8)	

**TACAN RWY 08**

52°27.44'N  
009°25.63'E

**WUNSTORF (ETNW)**