

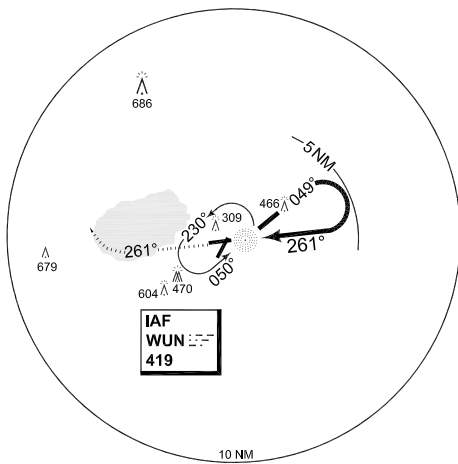
**TERPS
INSTRUMENT APPROACH CHART**

AD ELEV 187

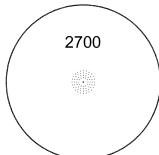
**NDB RWY 26
WUNSTORF (ETNW)**

BREMEN RADAR 259.725 131.325		WUNSTORF RADAR 389.400 142.500		WUNSTORF TWR 282.000 138.600			
NDB WUN 419	APP COURSE 261°			MDA 780	TDZE 172	ALS-Length UNKNOWN	LDA 6157

IAF
52°27.56'N
009°27.28'E



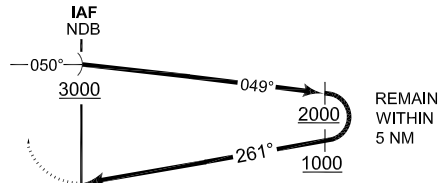
MSA WUN 25 NM



EMERG SAFE ALT 100 NM 6100

TA 5000

MISSED APPROACH
Climb on heading 261° to 1000 ft, then RT, climbing to 2000 ft and rehome NDB.



TDZE 172 → 0.5 ←

UNKNOWN

CHANGE: ALS LENGTH (27/1/11)

CATEGORY	A	B	C	D	E
S-NDB 26	780 - 0.8 608 (600-0.8/1.6)		780 - 2.0 608 (600-2.0/2.8)	780 - 2.4 608 (600-2.4/3.2)	
CIRCLING	780 - 1.6 593 (600-1.6)		780 - 2.4 593 (600-2.4)	780 - 3.2 593 (600-3.2)	

HAT/ceiling waived by 8 feet for ceiling value 600 feet.

NDB RWY 26

52°27.44'N
009°25.63'E

WUNSTORF (ETNW)

AFSBw 12 JAN 2012