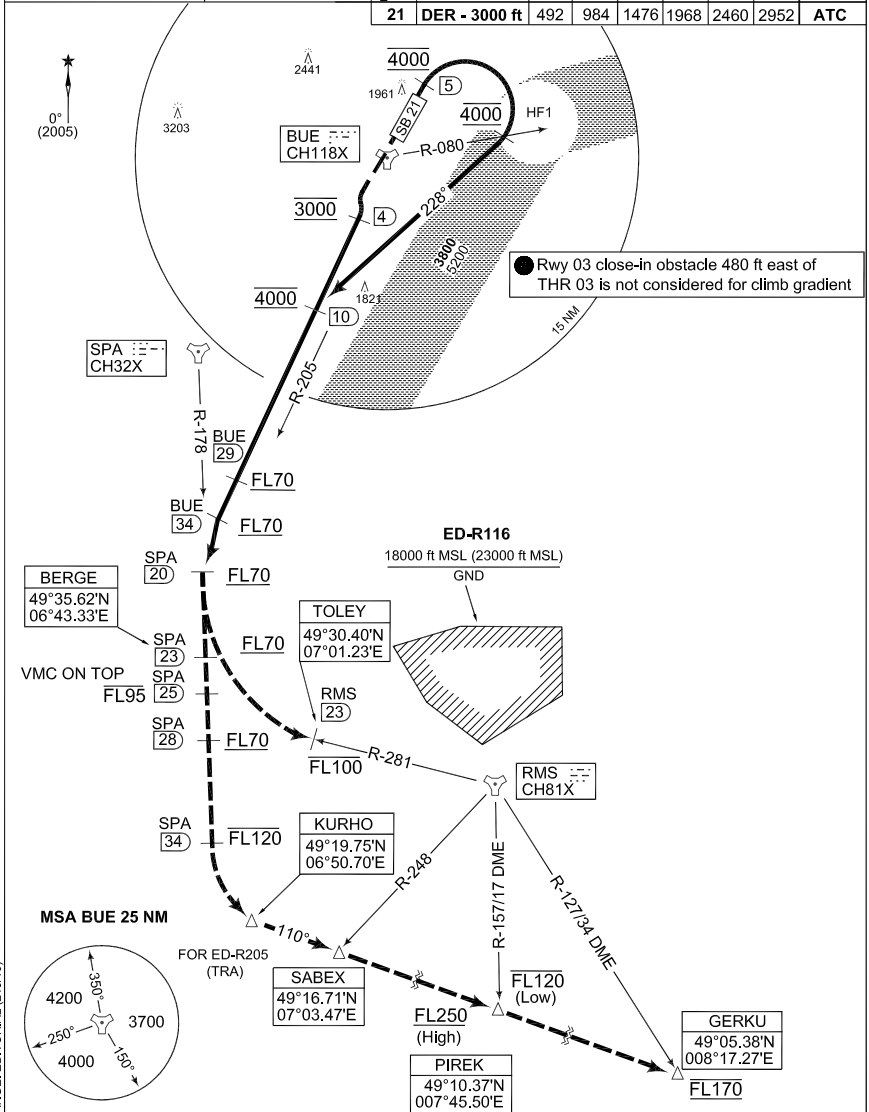


**TERPS
INSTRUMENT DEPARTURE CHART**

**SB 1 - 21
BÜCHEL (ETSB)**

BÜCHEL TWR 275.450 140.450		BÜCHEL RADAR 254.550 336.850 344.625 371.350				LANGEN RADAR 375.700 125.600						
RHEIN RADAR 387.150		AD ELEV 1568		RWY	from - to	60	120	180	240	300	360	Reason
				03	DER - 4000 ft	520	1040	1560	2080	2600	3120	ATC
				21	DER - 3000 ft	492	984	1476	1968	2460	2952	ATC



EMERG SAFE ALT 100 NM 5400

TA 5000

SB 1 - 21

50°10.43'N
007°03.80'E

BÜCHEL (ETSB)

CHANGE: EDITORIAL (219/110)

AFSBw 26 AUG 2010