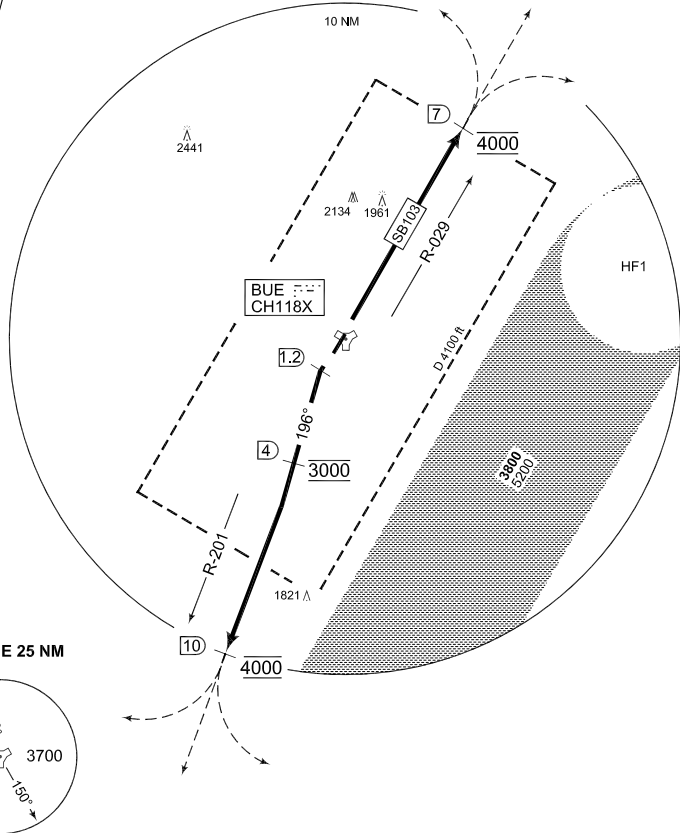


**PANS-OPS  
OPERATIONAL INSTRUMENT DEPARTURE CHART**

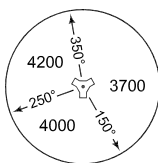
**SB 103 - 121  
BÜCHEL (ETSB)**

BÜCHEL TWR 275.450 122.100 140.450			BÜCHEL RADAR 371.350 254.550 123.300				LANGEN RADAR 340.325 125.600 375.550				
AD ELEV <b>1568</b>			RWY	from - to	60	120	180	240	300	360	Reason
			● 03	DER - 4000 ft	369	738	1107	1476	1845	2214	ATC
			21	DER - 3000 ft	509	1018	1527	2036	2545	3054	ATC

● Rwy 03 close-in obstacle 480 ft east of THR 21 is not considered for climb gradient



MSA BUE 25 NM



**EMERG SAFE ALT 100 NM 5400**

**TA 5000**

SB 103 (RWY 03)	<ul style="list-style-type: none"> <li>- Climb and turn right to intercept BUE R-029 to 4000 ft</li> <li>- Cross BUE 7 DME at 4000 ft</li> <li>- Continue as cleared by ATC</li> </ul>
SB 121 (RWY 21)	<ul style="list-style-type: none"> <li>- Climb on track 208°</li> <li>- When crossing BUE 1.2 DME turn left on track 196° to intercept BUE R-201</li> <li>- Cross BUE 4 DME at 3000 ft</li> <li>- Cross BUE 10 DME at 4000 ft</li> <li>- Continue as cleared by ATC</li> </ul>

CHANGE: PROCEDURE (233/10)

AFSBw 26 AUG 2010

**SB 103 - 121**

50°10.43'N  
007°03.80'E

**BÜCHEL (ETSB)**