

**MIPS**  
**OPERATIONAL INSTRUMENT DEPARTURE CHART**

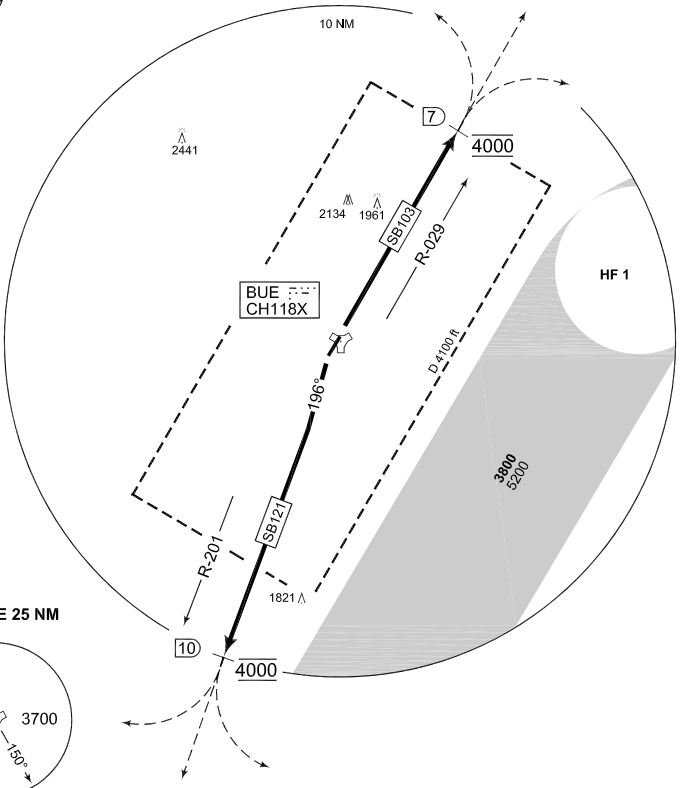
AD ELEV 1568

**SB 103 - 121**  
**BUECHEL (ETSB)**

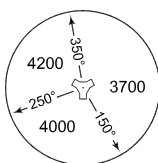
BUECHEL TWR 275.450 140.450		BUECHEL RADAR 336.850 344.625 371.350				LANGEN RADAR 375.700 125.600			
	254.550								
RWY	from - to	60	120	180	240	300	360	Reason	
03	DER - 4000 ft	369	738	1107	1476	1845	2214	ATC	
21	DER - 4000 ft	271	542	813	1084	1355	1626	ATC	

**NOTE:**

- RWY 03 CLOSE-IN OBSTACLE 480 FT EAST OF THR
- 21 IS NOT CONSIDERED FOR CLIMB GRADIENT.
- b) NO TURN BEFORE DER



MSA BUE 25 NM



**EMERG SAFE ALT 100 NM 5400**

**TA 5000**

SB 103 ( RWY 03 )	- Climb and turn right to intercept BUE R-029 to 4000 ft - Cross BUE 7 DME at 4000 ft - Continue as cleared by ATC
SB 121 ( RWY 21 )	- Climb on track 196° to 4000 ft to intercept BUE R-201 - Cross BUE 10 DME at 4000 ft - Continue as cleared by ATC - Initial Climb altitude 4000 ft

CHANGE: NOTE DEPICTION, NLEFS (278/11, 270/11)

AFSBw 12 JAN 2012

**SB 103 - 121**

50°10.43'N  
007°03.80'E

**BUECHEL (ETSB)**